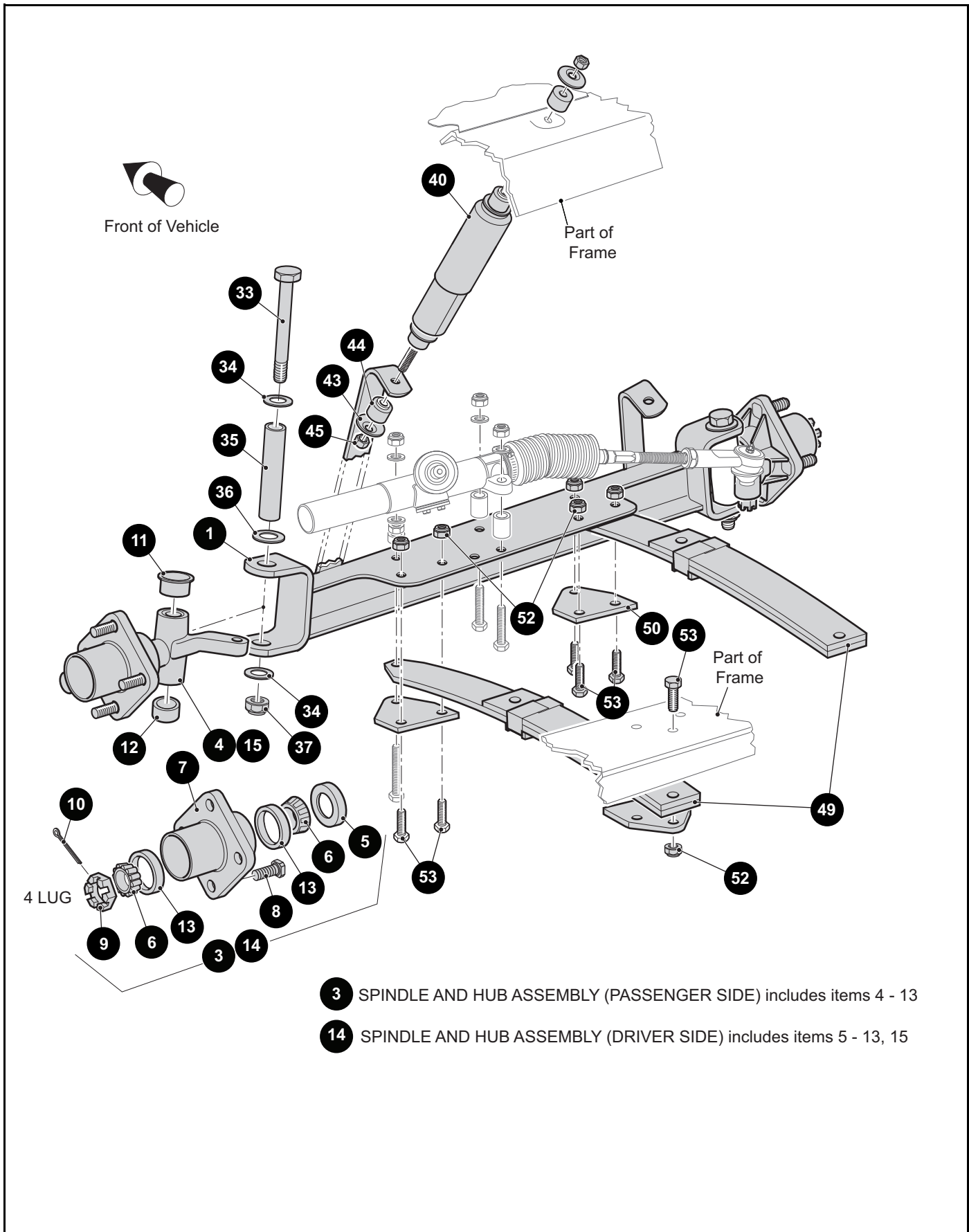


# FRONT SUSPENSION AND STEERING

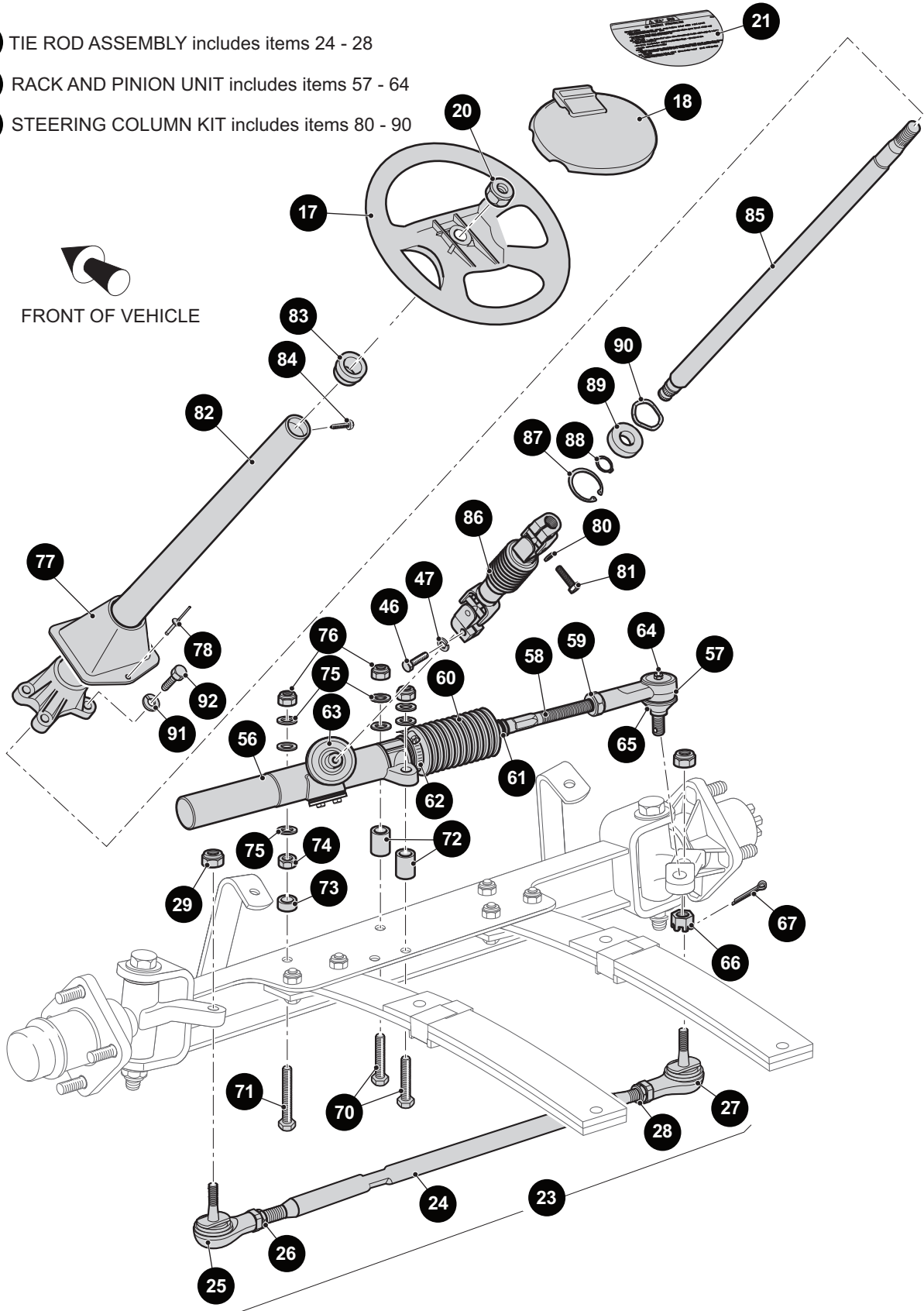


# FRONT SUSPENSION AND STEERING

**23** TIE ROD ASSEMBLY includes items 24 - 28

**56** RACK AND PINION UNIT includes items 57 - 64

**79** STEERING COLUMN KIT includes items 80 - 90



## FRONT SUSPENSION AND STEERING

When ordering parts, please specify the model and serial number of the product.

\* Indicates a component that is not available as an individual part.

\*\*\* Indicates consult Customer Service Department for additional information.

ITEM	PART NO.	1 2 3 4 5	DESCRIPTION	QTY.
1	602513		FRONT AXLE .....	1
2				
3	70942G03		SPINDLE AND HUB ASSEMBLY, 4 LUG (PASSENGER SIDE) (INCLUDES ITEMS 4 - 13).....	1
4	70940G02		SPINDLE ASSEMBLY (PASSENGER SIDE).....	1
5	25146G1		GREASE SEAL .....	1
6	11750G2		ROLLER BEARING.....	2
7	70589G01		WHEEL HUB.....	1
8	19862G1		LUG BOLT, 1/2" - 20 X 1 3/16" LG .....	4
9	12093G1		CASTELLATED NUT, 1" - 14 .....	1
10	00798G8		COTTER PIN, 5/32" X 1 3/4" LG.....	1
11	70648G01		FLANGED BEARING .....	1
12	70749G01		BEARING .....	1
13	51141G1		RACE BEARING .....	2
14	70673G03		SPINDLE AND HUB ASSEMBLY, 4 LUG (DRIVER SIDE) (INCLUDES ITEMS 5 - 13, 15).....	1
15	70742G02		SPINDLE ASSEMBLY (DRIVER SIDE) .....	1
16				
17	602979		STEERING WHEEL .....	1
18	607925		CLIPBOARD .....	1
19				
20	14390G2		LOCK NUT, 5/8" - 18 .....	1
21	608529		WARNING LABEL .....	1
22				
23	70876G02		TIE ROD ASSEMBLY (INCLUDES ITEMS 24 - 28).....	1
24	70897G02		THREADED ROD, 24" LG .....	1
25	70902G01		TIE ROD END (LEFT HAND THREADS) .....	1
26	01069G01		JAM NUT, M12 X 1.25 (LEFT HAND THREADS).....	1
27	70902G02		TIE ROD END (RIGHT HAND THREADS).....	1
28	01069G02		JAM NUT, M12 X 1.25 (RIGHT HAND THREADS).....	1
29	00734G1		LOCK NUT, 7/16" - 14 .....	2
30				

## FRONT SUSPENSION AND STEERING

When ordering parts, please specify the model and serial number of the product.

\* Indicates a component that is not available as an individual part.

\*\*\* Indicates consult Customer Service Department for additional information.

ITEM	PART NO.	1 2 3 4 5	DESCRIPTION	QTY.
31				
32				
33	00407G6		HEX HEAD BOLT 1/2" - 13 X 6" LG.....	2
34	00560G3		WASHER, 1/2".....	4
35	70745G01		KING PIN TUBE.....	2
36	70754G01		THRUST WASHER (SS), 1".....	2
37	14390G6		LOCK NUT, 1/2" - 13.....	2
38				
39				
40	76419G01		SHOCK ABSORBER.....	2
41				
42				
43	10435G1		SHOCK ABSORBER WASHER.....	8
44	10194G1		RUBBER BUSHING.....	8
45	00532G6		HEX NUT, 3/8" - 24.....	4
46	01055G01		HEX HEAD SCREW, M8 X 1.25 LG.....	1
47	00565G8		LOCK WASHER, 5/16".....	1
48				
49	70990G03		LEAF SPRING (SEE PART NUMBER ON SPRING).....	2
50	70163G03		SPRING PLATE.....	4
51				
52	00734G1		LOCK NUT, 7/16" - 14.....	11
53	00463G11		HEX HEAD BOLT, 7/16" - 14 X 1 3/4" LG.....	11
54				
55				
56	70964G01		RACK AND PINION UNIT (COMPLETE) (INCLUDES ITEMS 57 - 64).....	1
57	70695G01		RACK BALL JOINT.....	1
58	*		RACK EXTENSION.....	1
59	*		JAM NUT, 1/2" - 20.....	1
60	70961G01		RACK BOOT.....	1
61	12416G2		WIRE TIE.....	1