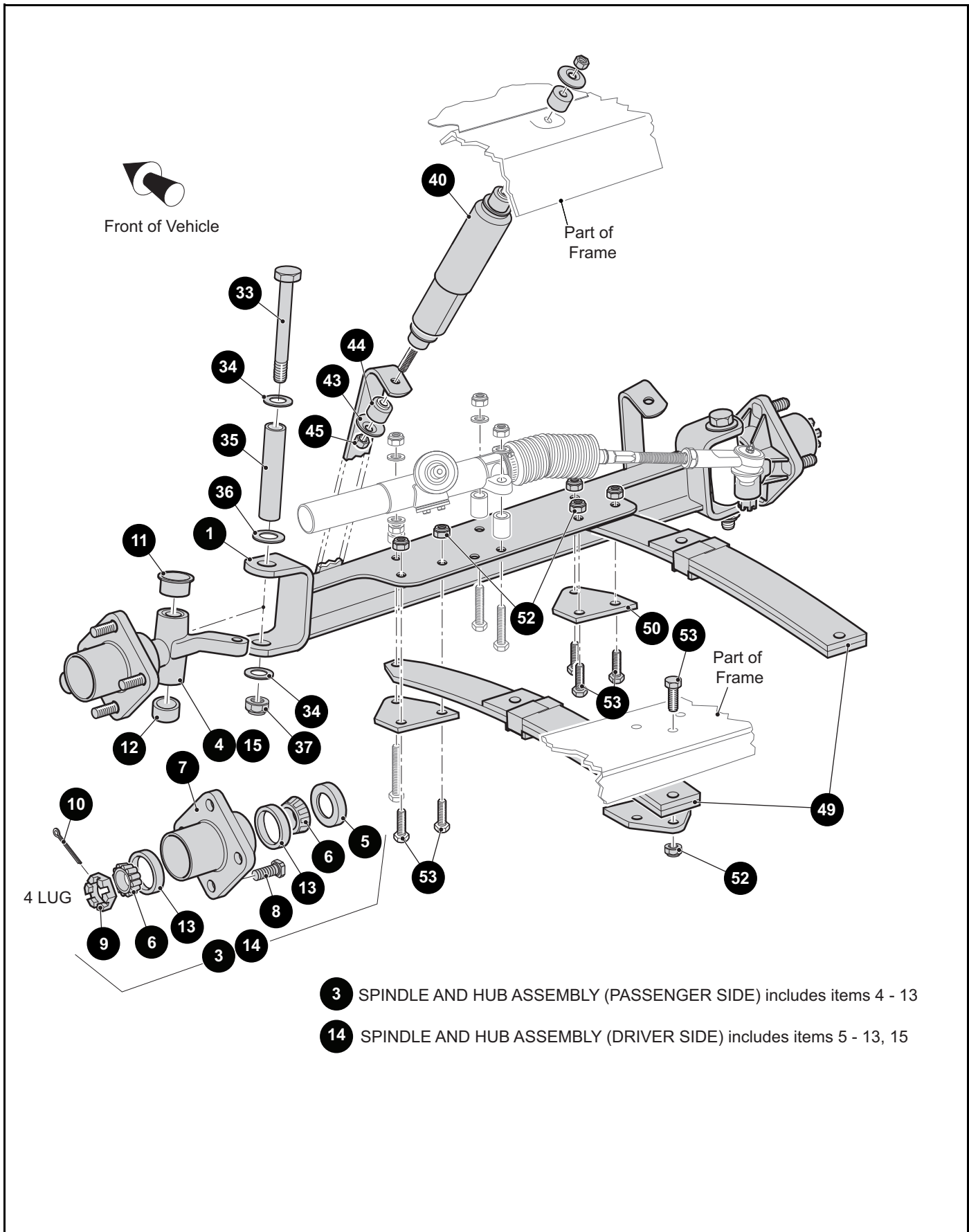


FRONT SUSPENSION AND STEERING

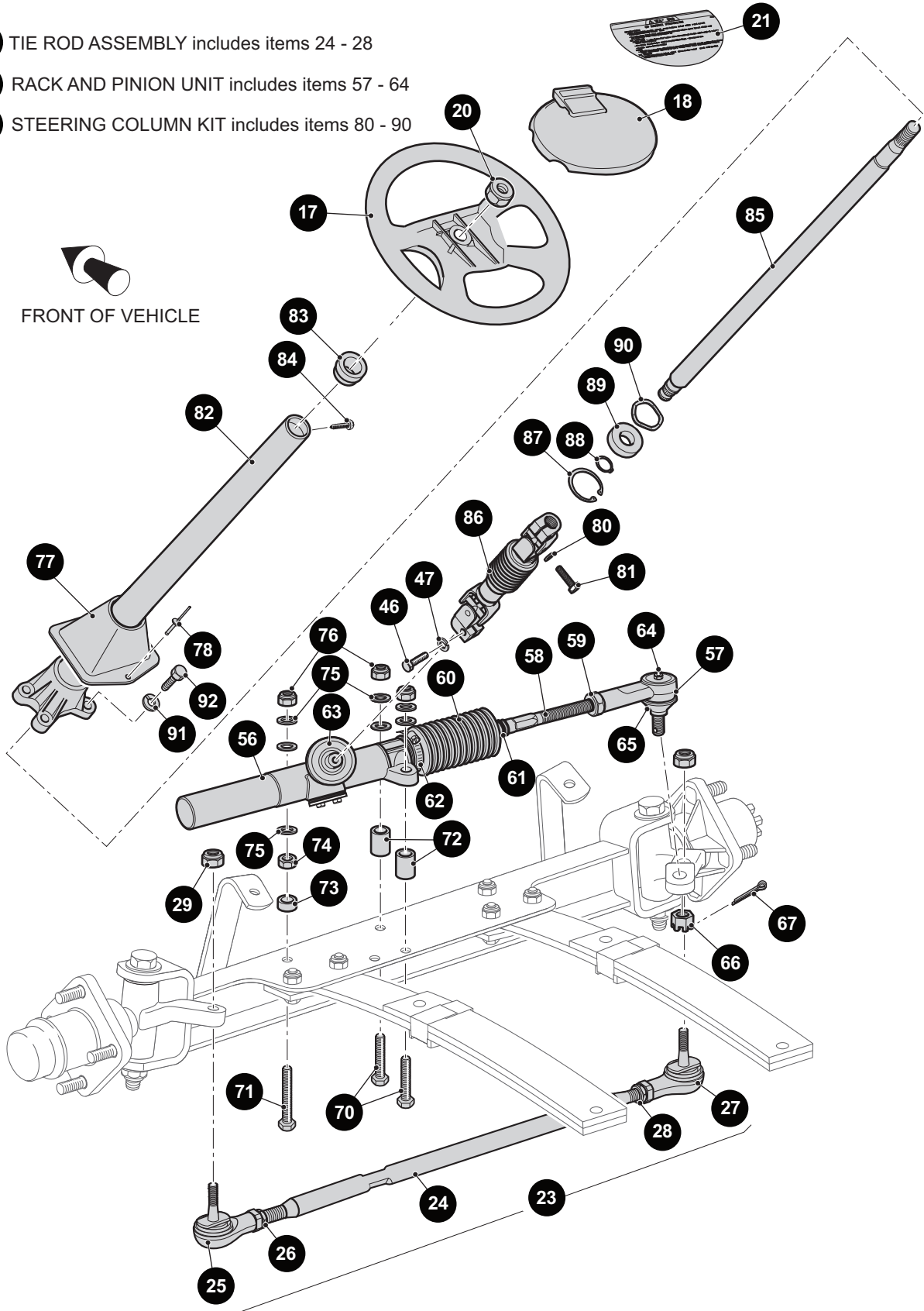


FRONT SUSPENSION AND STEERING

23 TIE ROD ASSEMBLY includes items 24 - 28

56 RACK AND PINION UNIT includes items 57 - 64

79 STEERING COLUMN KIT includes items 80 - 90



FRONT SUSPENSION AND STEERING

When ordering parts, please specify the model and serial number of the product.

* Indicates a component that is not available as an individual part.

*** Indicates consult Customer Service Department for additional information.

| ITEM | PART NO. | 1 2 3 4 5 | DESCRIPTION | QTY. |
|------|----------|-----------|---|------|
| 1 | 602513 | | FRONT AXLE | 1 |
| 2 | | | | |
| 3 | 70942G03 | | SPINDLE AND HUB ASSEMBLY, 4 LUG (PASSENGER SIDE) (INCLUDES ITEMS 4 - 13)..... | 1 |
| 4 | 70940G02 | | SPINDLE ASSEMBLY (PASSENGER SIDE)..... | 1 |
| 5 | 25146G1 | | GREASE SEAL | 1 |
| 6 | 11750G2 | | ROLLER BEARING..... | 2 |
| 7 | 70589G01 | | WHEEL HUB..... | 1 |
| 8 | 19862G1 | | LUG BOLT, 1/2" - 20 X 1 3/16" LG | 4 |
| 9 | 12093G1 | | CASTELLATED NUT, 1" - 14 | 1 |
| 10 | 00798G8 | | COTTER PIN, 5/32" X 1 3/4" LG..... | 1 |
| 11 | 70648G01 | | FLANGED BEARING | 1 |
| 12 | 70749G01 | | BEARING | 1 |
| 13 | 51141G1 | | RACE BEARING | 2 |
| 14 | 70673G03 | | SPINDLE AND HUB ASSEMBLY, 4 LUG (DRIVER SIDE) (INCLUDES ITEMS 5 - 13, 15)..... | 1 |
| 15 | 70742G02 | | SPINDLE ASSEMBLY (DRIVER SIDE) | 1 |
| 16 | | | | |
| 17 | 602979 | | STEERING WHEEL | 1 |
| 18 | 607925 | | CLIPBOARD | 1 |
| 19 | | | | |
| 20 | 14390G2 | | LOCK NUT, 5/8" - 18 | 1 |
| 21 | 608529 | | WARNING LABEL | 1 |
| 22 | | | | |
| 23 | 70876G02 | | TIE ROD ASSEMBLY (INCLUDES ITEMS 24 - 28)..... | 1 |
| 24 | 70897G02 | | THREADED ROD, 24" LG | 1 |
| 25 | 70902G01 | | TIE ROD END (LEFT HAND THREADS) | 1 |
| 26 | 01069G01 | | JAM NUT, M12 X 1.25 (LEFT HAND THREADS)..... | 1 |
| 27 | 70902G02 | | TIE ROD END (RIGHT HAND THREADS)..... | 1 |
| 28 | 01069G02 | | JAM NUT, M12 X 1.25 (RIGHT HAND THREADS)..... | 1 |
| 29 | 00734G1 | | LOCK NUT, 7/16" - 14 | 2 |
| 30 | | | | |

FRONT SUSPENSION AND STEERING

When ordering parts, please specify the model and serial number of the product.

* Indicates a component that is not available as an individual part.

*** Indicates consult Customer Service Department for additional information.

| ITEM | PART NO. | 1 2 3 4 5 | DESCRIPTION | QTY. |
|------|----------|-----------|---|------|
| 31 | | | | |
| 32 | | | | |
| 33 | 00407G6 | | HEX HEAD BOLT 1/2" - 13 X 6" LG..... | 2 |
| 34 | 00560G3 | | WASHER, 1/2"..... | 4 |
| 35 | 70745G01 | | KING PIN TUBE..... | 2 |
| 36 | 70754G01 | | THRUST WASHER (SS), 1"..... | 2 |
| 37 | 14390G6 | | LOCK NUT, 1/2" - 13..... | 2 |
| 38 | | | | |
| 39 | | | | |
| 40 | 76419G01 | | SHOCK ABSORBER..... | 2 |
| 41 | | | | |
| 42 | | | | |
| 43 | 10435G1 | | SHOCK ABSORBER WASHER..... | 8 |
| 44 | 10194G1 | | RUBBER BUSHING..... | 8 |
| 45 | 00532G6 | | HEX NUT, 3/8" - 24..... | 4 |
| 46 | 01055G01 | | HEX HEAD SCREW, M8 X 1.25 LG..... | 1 |
| 47 | 00565G8 | | LOCK WASHER, 5/16"..... | 1 |
| 48 | | | | |
| 49 | 70990G03 | | LEAF SPRING (SEE PART NUMBER ON SPRING)..... | 2 |
| 50 | 70163G03 | | SPRING PLATE..... | 4 |
| 51 | | | | |
| 52 | 00734G1 | | LOCK NUT, 7/16" - 14..... | 11 |
| 53 | 00463G11 | | HEX HEAD BOLT, 7/16" - 14 X 1 3/4" LG..... | 11 |
| 54 | | | | |
| 55 | | | | |
| 56 | 70964G01 | | RACK AND PINION UNIT (COMPLETE) (INCLUDES ITEMS 57 - 64)..... | 1 |
| 57 | 70695G01 | | RACK BALL JOINT..... | 1 |
| 58 | * | | RACK EXTENSION..... | 1 |
| 59 | * | | JAM NUT, 1/2" - 20..... | 1 |
| 60 | 70961G01 | | RACK BOOT..... | 1 |
| 61 | 12416G2 | | WIRE TIE..... | 1 |