



17-098

STRETCH KIT

WILL FIT CLUB CAR® PRECEDENT® WITH GAS ENGINE
INSTALLATION INSTRUCTIONS

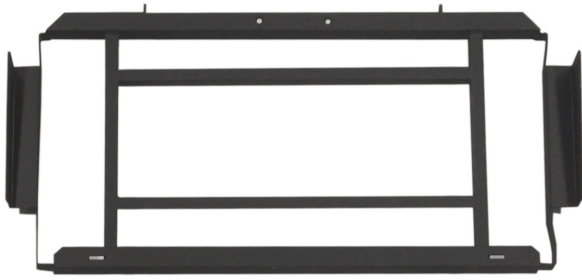
INCLUDED:

Thread locking adhesive
Cup Holder
Diamond Plate Floor mat
Floor mat retainers (Inside Box 2)
Seat Frame
Seat support brackets
Threshold
Grab bar
Seat Frame Closeouts
Jounce supports
Jounce bumpers
Throttle Cable
F-N-R Harness
Shift Cable
Brake Pad Harness Extension
GCOR Harness
MJ Light Kit Harness
Center Floor Support
Side Floor Supports
Floor Cover Plate
Frame extension Cover
Frame extensions
Extended Equalizer Rod
Threshold
Hardware Packs 1-6
Seat Back Plate
Shift Cable Bracket
Front Shifter Plate
Choke Cable Bracket
Rear Throttle Bracket
Throttle Cable Crimp
F-N-R Ball Stud
Main Harness Extension
Choke Cable

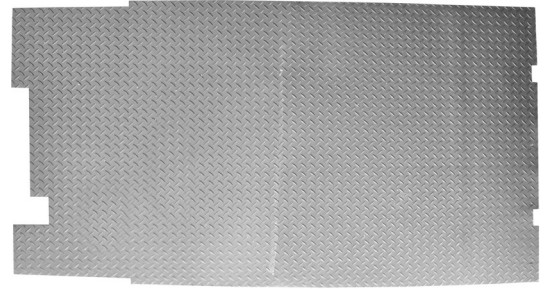
TOOLS NEEDED:

Mechanic's Toolbox
Cordless Drill
Chalkline
Tape measure
Rivet Gun
Sawzall
Reciprocating Saw
21/26" Drill Bit
8-10" Sawzall metal Blade
#3 Phillips Bit

We recommend professional installation. If you choose to not have this product installed by a professional, we highly recommend that you exercise caution, care, and patience when installing this product as it involves drilling holes into your cart's body.



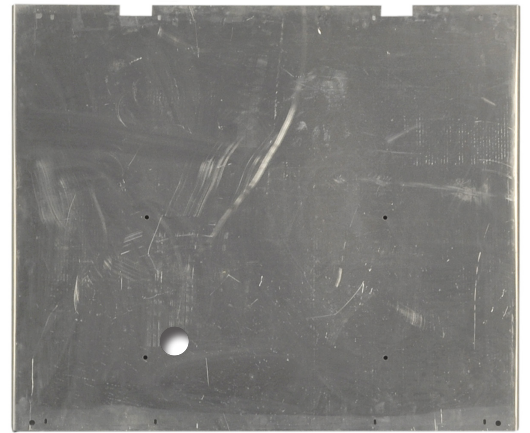
Seat Frame



Floor Mat



Small Center Pan



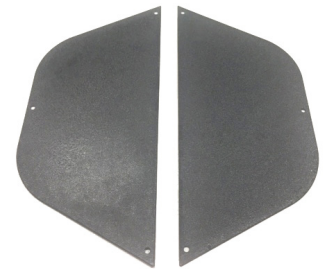
Large Floor Pan



FNR Panel



Threshold



Seat Frame Closeouts



Seat Frame Supports (2)



Grab Bar



Cup holder



Throttle Cable Bracket



Shift Cable Bracket



Choke Bracket



Brake Rod



Frame extensions



Floor Mat Retainers (2)



F-N-R Harness



Brake Extension



Main Harness Extension



Choke Cable



Shift Cable

1

Switch key to OFF position. Place TOW/RUN switch to TOW. Disconnect battery by unhooking the main negative first then the main positive.

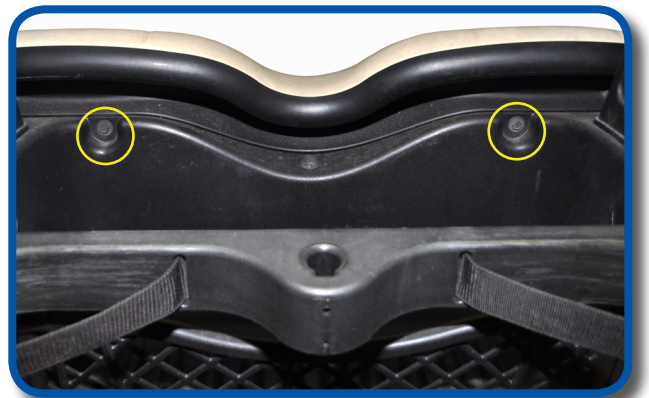


2

Detach canopy by removing the 6-bolts in struts. Discard Canopy and Hardware.

3

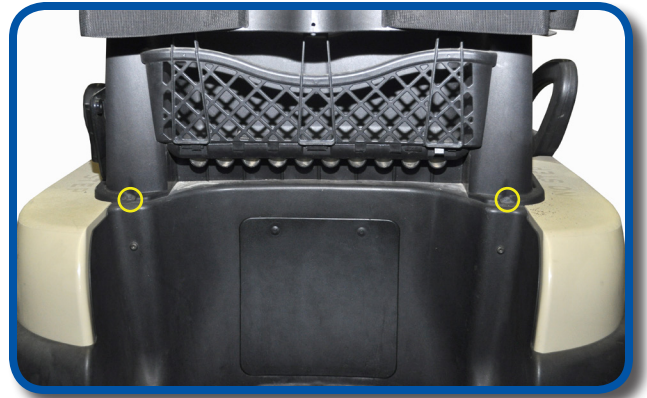
Remove front seat hardware located behind seat. Remove front seat cushion. Retain hardware.



4

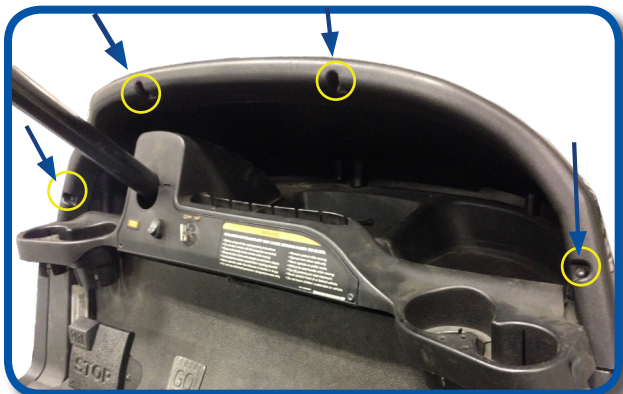
Remove lower rear strut hardware located on inside of basket. Remove factory struts.

5
Remove hardware from base of basket. Two bolts are located in the rear and two bolts located in the front. Retain hardware for seat kit install.



6
Remove hardware from basket retainer. Remove basket retainer. Retain hardware for seat kit install.

7
Remove bolt from strut cover and bolts from front struts. Detach front struts by removing the factory bolts. Retain all factory hardware. You will need it later.



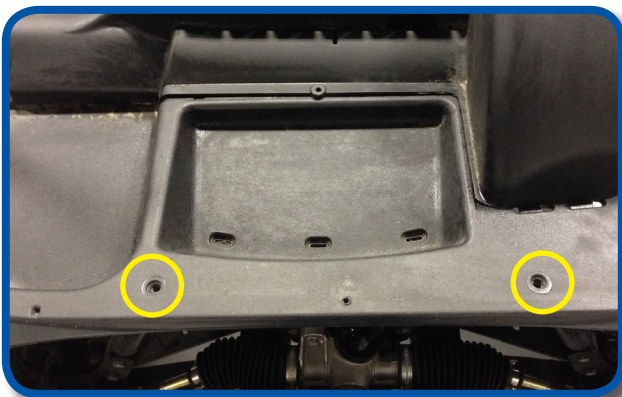
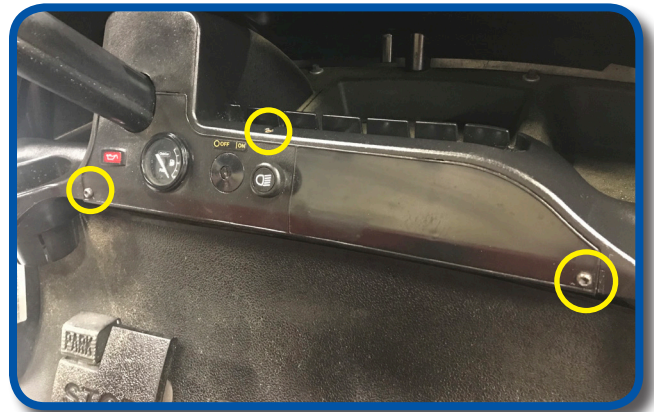
8
Remove brow cap by taking out the four screws as shown and retain. Remove cowl from front of cart and retain.



Remove front Brow and Fascia assembly from front under body by removing 5 screws shown and retain.

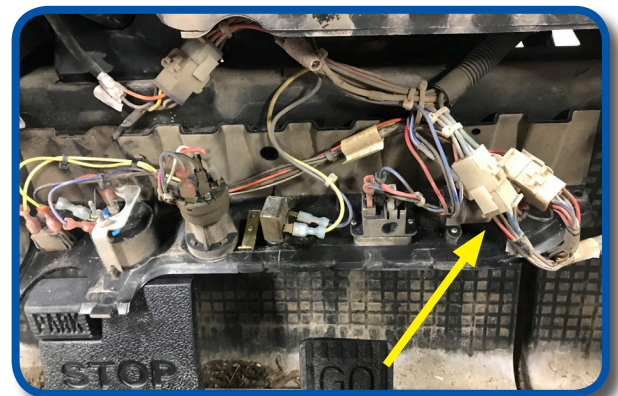
Remove 3 screws in instrument panel and detach from dash.

NOTE: Before disconnecting any electrical harness such as light kit or bucket harness. Mark with tape or take picture for reassembly if needed.



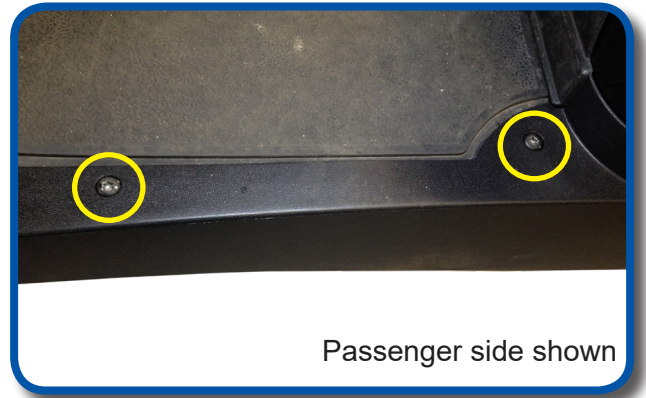
Remove screws from dash assembly. Retain Hardware.

Disconnect the two 9 pin connectors located behind the dash.



13

Locate the two front screws as well as the back screw/rivet in the floormat retainers. Remove retainers, save hardware and retainers.

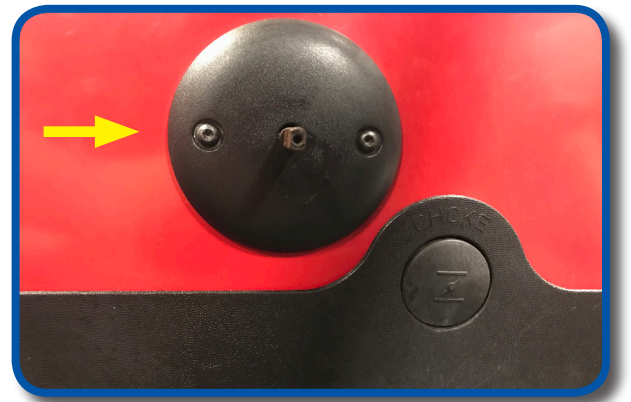


14

Using a #2 Phillips tip, remove the set screw from the FNR lever and retain. A pry bar may be required to remove lever from lever mount.

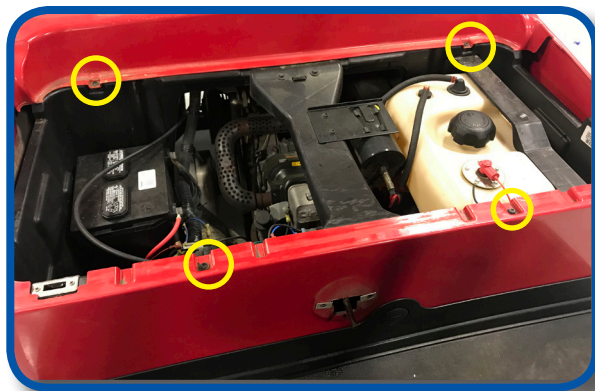
15

Using a T25 bit, remove and retain FNR cover.



16

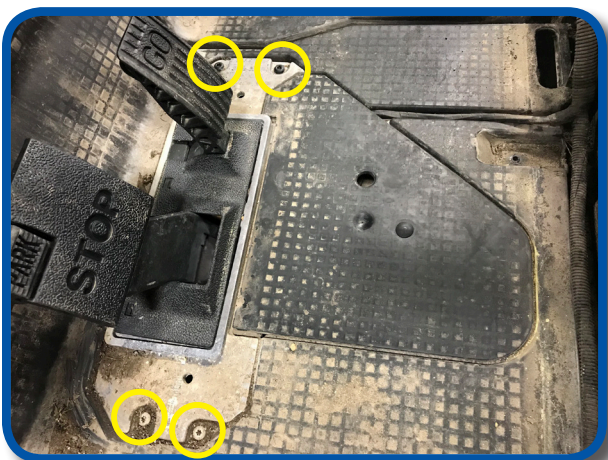
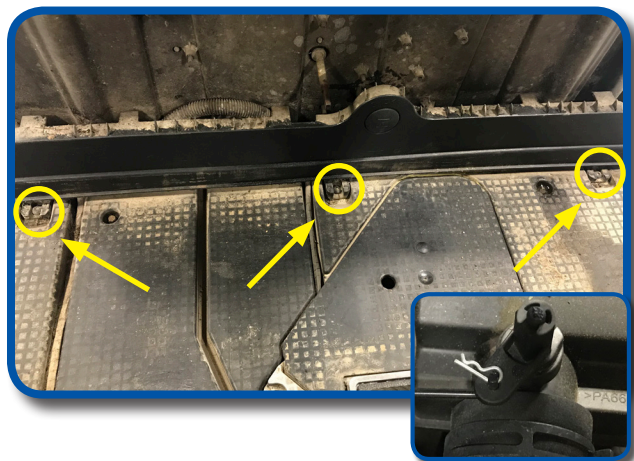
Detach the rear body by removing the four screws as shown. Retain all hardware.



17

Remove the floor mat. DO NOT retain.

Take off the floor mat cover plate by removing the 3 screws shown. Retain all.
To fully remove the cover plate you will need to disconnect the choke linkage in the engine bay. Remove and retain the K pin to free the choke. Retain all for reinstall later.

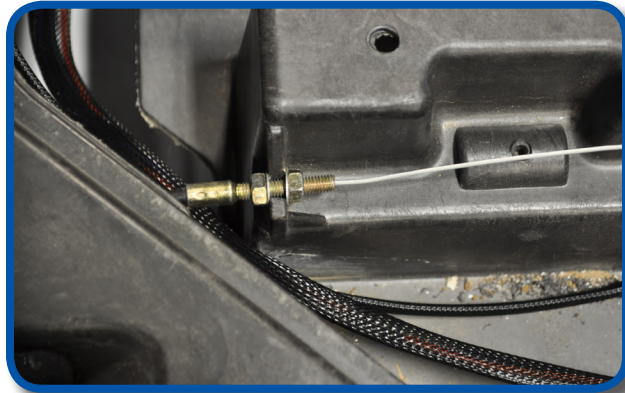


18

Remove and retain brake pedal cover. Remove and retain the 4 highlighted mounting screws of pedal assembly.

20

Disconnect the GCOR Harness from under the accelerator.
Disconnect any brake pads or brake switches.

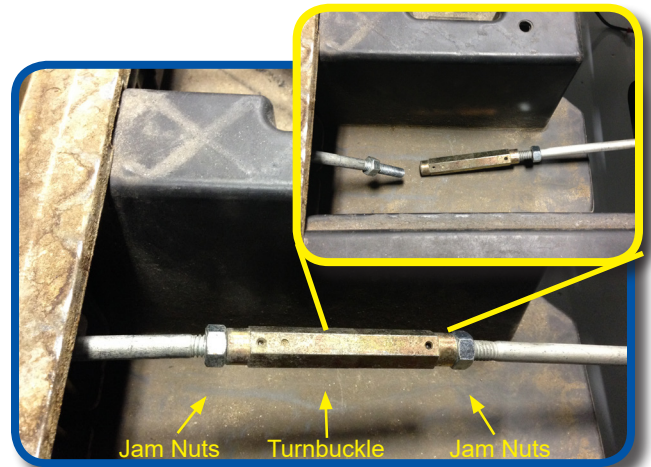


21

Loosen jam nuts on accelerator cable to detach cable from underbody.

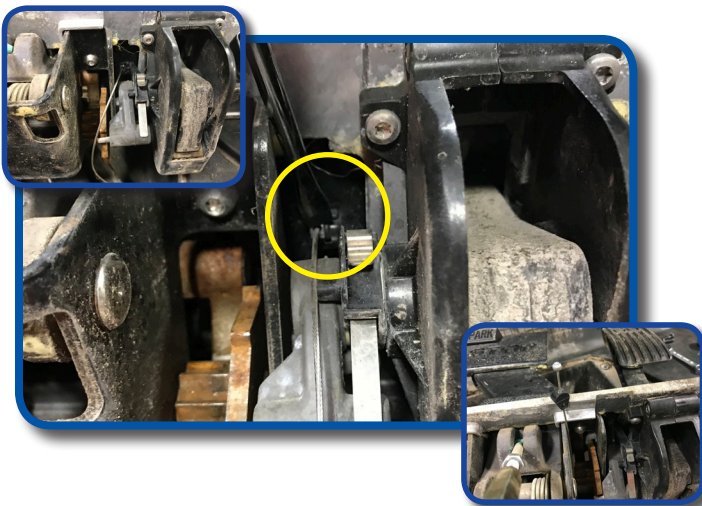
22

Loosen two jam nuts shown to free turnbuckle.

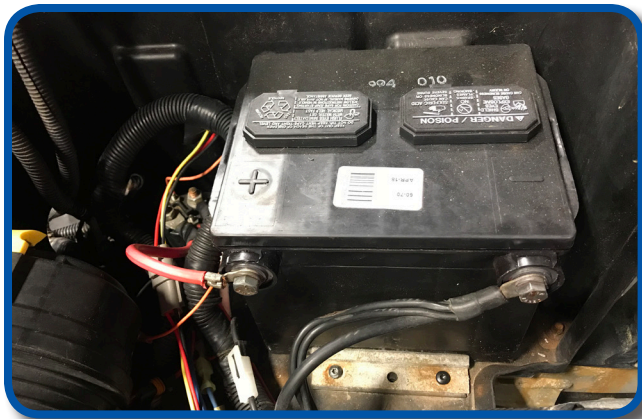


23

Using a flathead screwdriver release the accelerator cable from the pedal assembly.



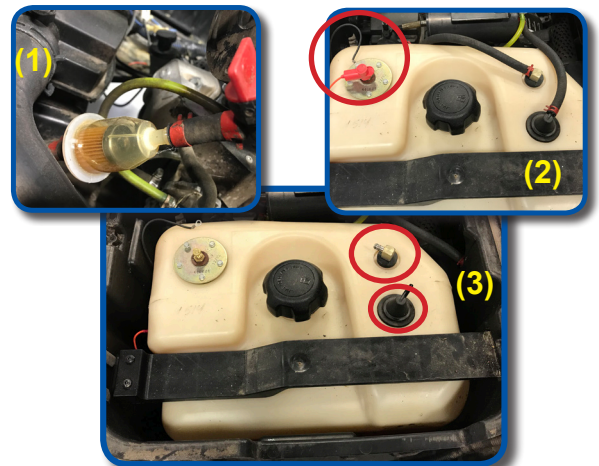
Remove turnbuckle and equalizer bracket by moving the buckle and bracket to the upright position. This will allow cable heads to slip out the top of the equalizer bracket. Retain Buckle, Equalizer Bracket and both washers. Discard threaded rod.



Remove battery hold down as shown. Also, disconnect ground wire with white spade connector highlighted in picture. Remove battery and retain all. *We recommend taking a photo of your battery connections and any accessory hookups for easier re-installation later.*

Fuel Tank Disclaimer: Before continuing, make sure you are in a well ventilated area due to gas fumes. We advise placing a drip pan under your cart to catch any fuel trapped in fuel lines when removing.

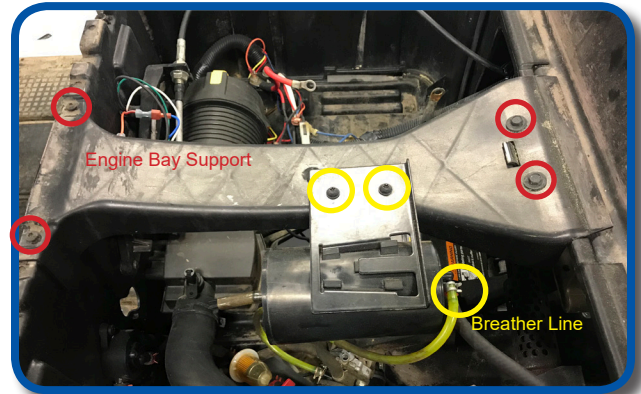
- 1) Shut off fuel supply valve as shown.
- 2) Remove red and black wires of fuel level indicator.
- 3) Disconnect fuel supply and vent line as shown.



Remove and retain fuel tank retainer bracket as shown. To remove the fuel tank, lift from the drivers side of the engine bay to clear air intake hose. Once cleared, lift straight out and store tank in a safe place until re-installation.

1) Remove emission canister by disconnecting breather line from carburetor as shown.

2) Now remove engine bay support using a T25 bit and 10mm socket on the highlighted screws.

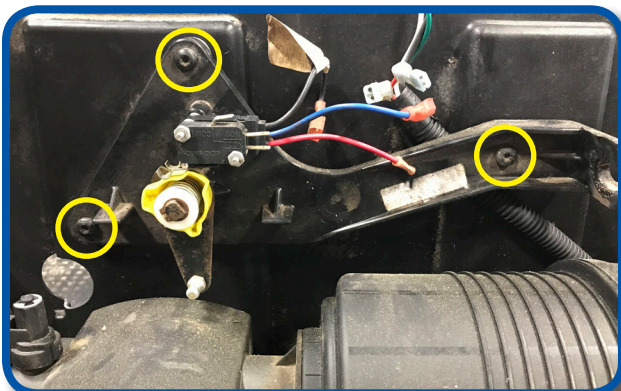
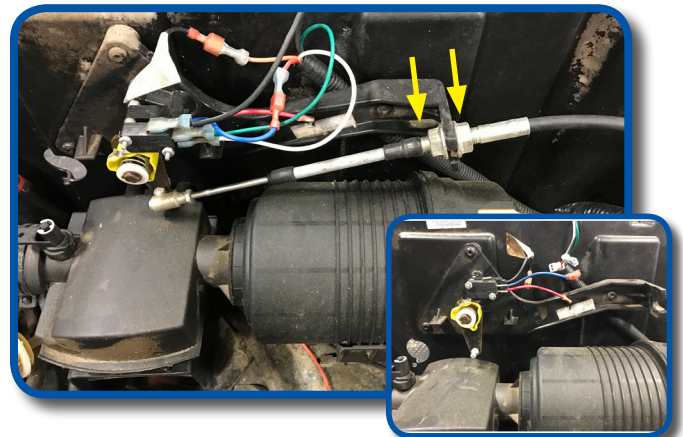


Remove and retain screws as shown. Lift the rear under body by the rear bumper first, then slide it out from under center under body. Retain.

Loosen jam nuts on shifter cable to release it from the shifter mount.

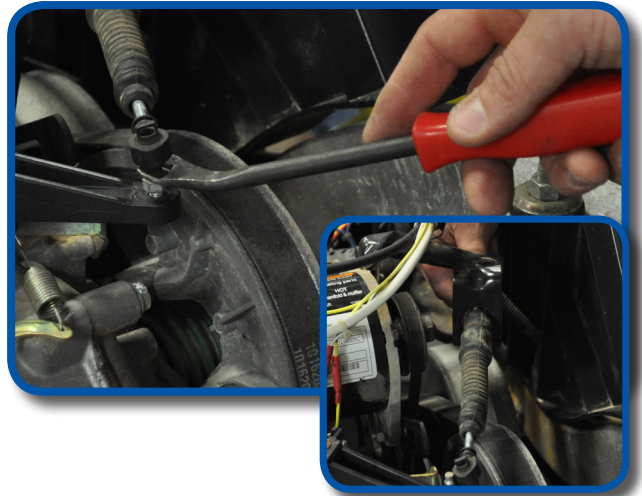
NOTE: Take a picture of how the wires are connected to the shifter switch for reinstallation later.

Disconnect wires from shifter switch.



Using a T25 bit, remove and retain shifter mount.

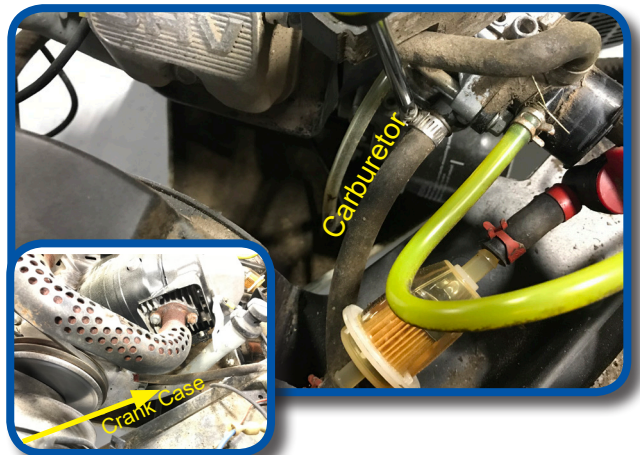
32 Remove shifter cable at rear of cart as shown.



33 Disconnect air intake at carburetor as shown.

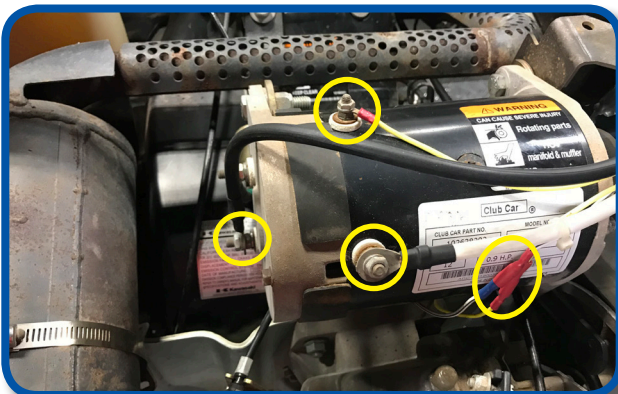


34 Remove fuel line at carburetor as shown. Remove fuel line at crank case.

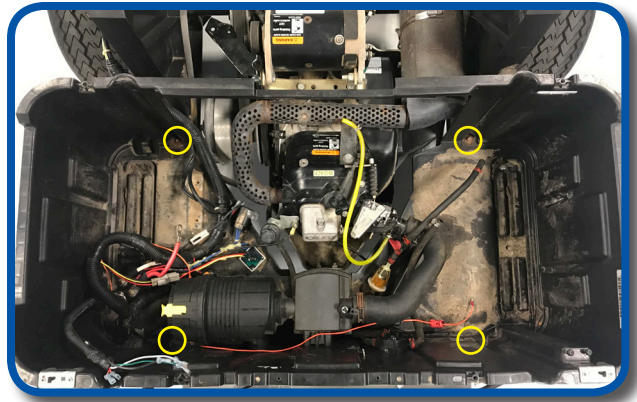


35 Disconnect the 3 motor cables and butt connectors as shown.

* Take a picture or mark cables/ wires for easier re-install.



Using a 10mm socket, remove the 4 highlighted bolts shown. The engine bay can now be removed from cart. Retain all.



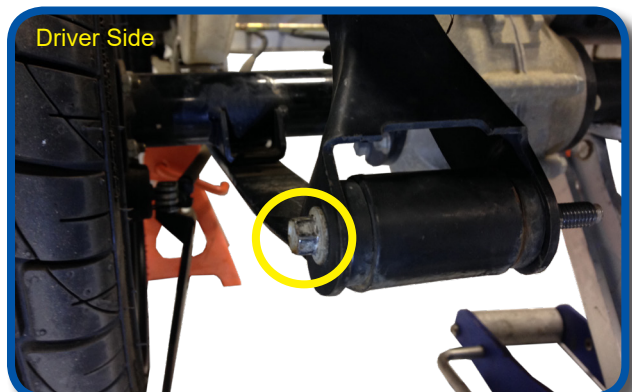
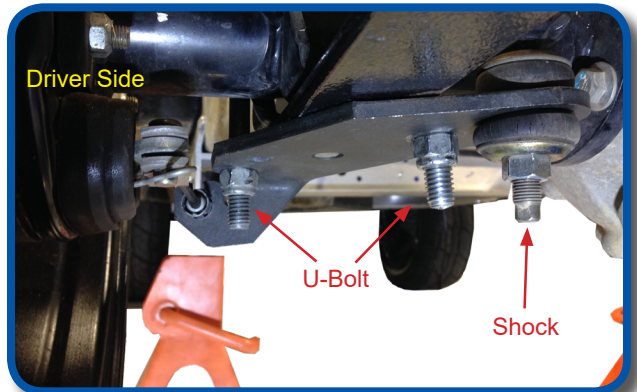
Note: For carts with lift kits, the jounce bumpers will not be used. You must use Heavy Duty rear leaf springs instead. Now is a good time to do so

To install new jounce supports, raise rear of cart with floor jack stands under frame. Leave floor jack under axle as shown.

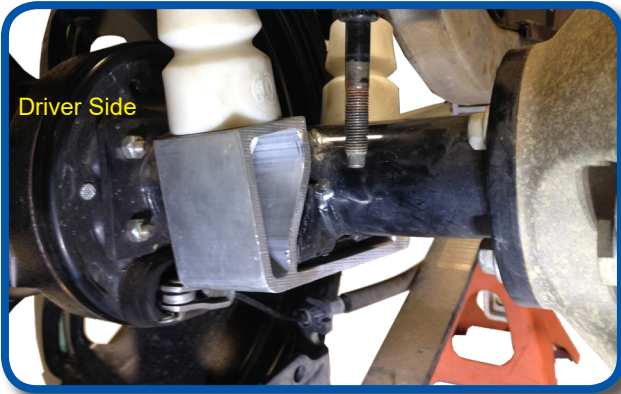
NOTE: Using floor jack to support axle raise jack enough to relieve tension on rear shocks.

NOTE: Using floor jack to support engine enough to relieve tension on rear shocks.

Remove and retain the U-Bolts with nuts. Remove shock from plate by loosening shock nut w/ bushing and cup washer. Push shock up and out of the way.



Carefully remove rear leaf spring bolt/nut and retain.



Assembly jounce bumpers to jounce brackets. Now slide jounce under axle as shown.

Reattach leaf spring, shock, shock mounting bracket, and U-Bolt as shown using retained hardware from step 38.

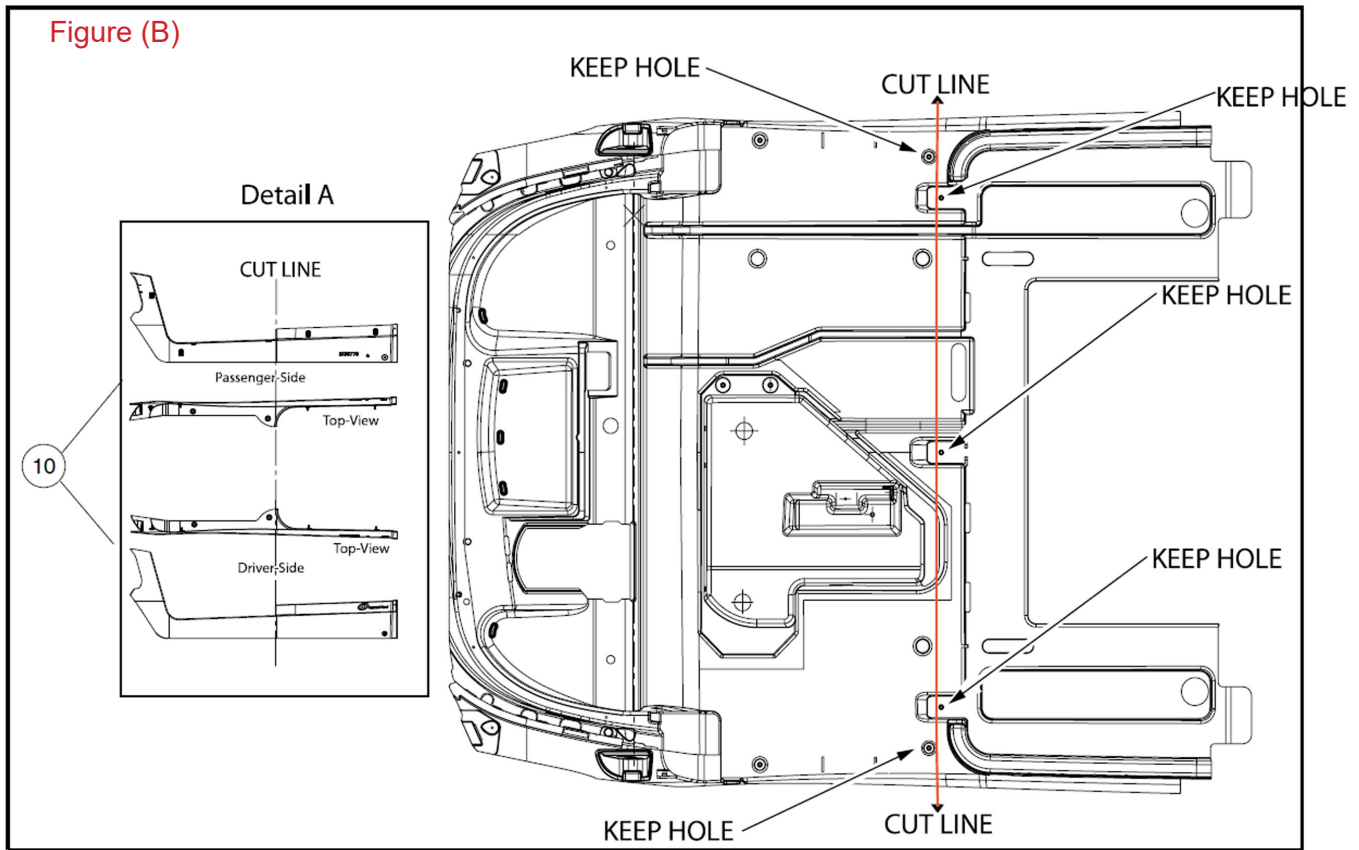
Repeat process on other side.



ATTENTION: The next steps will require the use of a reciprocating (sawzall) saw **DO NOT cut through the frame. The frame rails must be cut separately with the front underbody removed.**

Using a chalk line mark your cut line between the two under body screws and screw holes located in the molded depressions. See figure (A) below.





Measure, Mark, and Cut Front Underbody (Save the Holes indicated by Arrows)

Note: Be sure the cut line does not cut through any holes in the underbody, these will be used again. See figure (B) above.

The following steps are specific to the cutting process and require an assistant.



Using a reciprocating saw and a metal cutting blade between 8-10". Begin cutting along your chalk line from the outside of the under body to the outside of the first frame. DO NOT CUT FRAME.

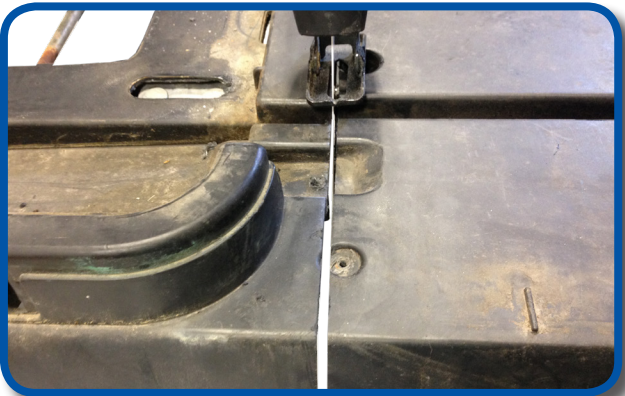
NOTE: Cut vertically and from the top side of the vehicle.



Starting in pedal box, cut back towards frame as shown. **Do not cut into frame.**



In the pedal box cut back towards the frame on the passenger side as shown. **Do not cut frame.**



Cut along cut line from outside of passenger side to frame. As shown. **Do not cut frame.**

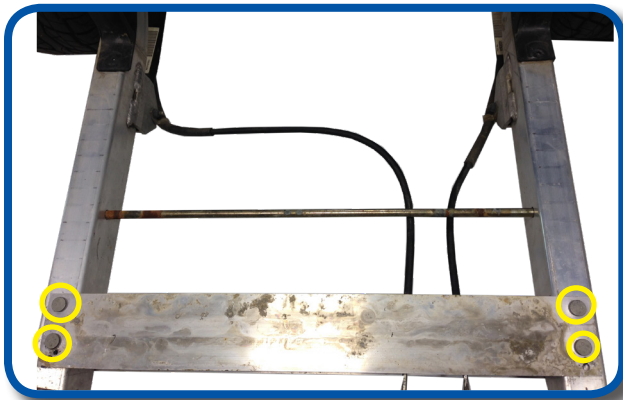
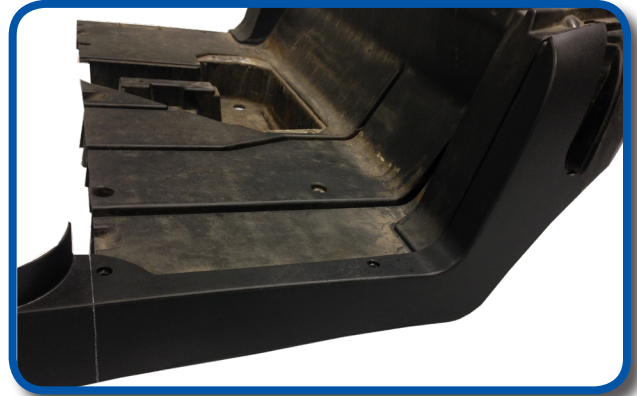
Remove and retain 3 floor board screws and front under body screws as shown. **Do not cut frame.**





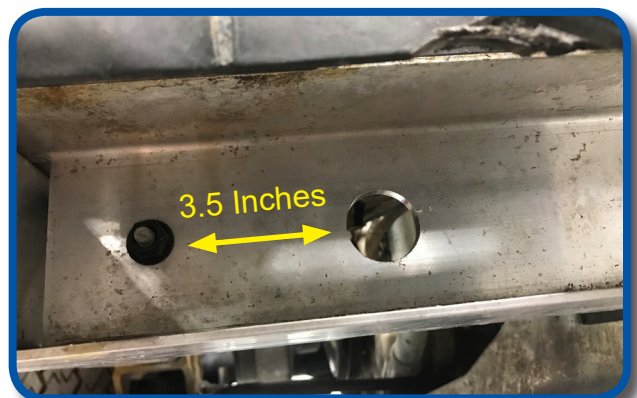
Remove the under body from cart and finish cutting along chalk line where the frame was. **Do not cut frame.**

Attach the floormat retainer to the removed front underbody. Using the cut underbody as a guide mark and cut the retainer. Repeat on other side. Keep both ends of floormat retainers, they will be used later. **Do not cut frame.** Spin front underbody around steering wheel and out of the way. You do not need to remove.

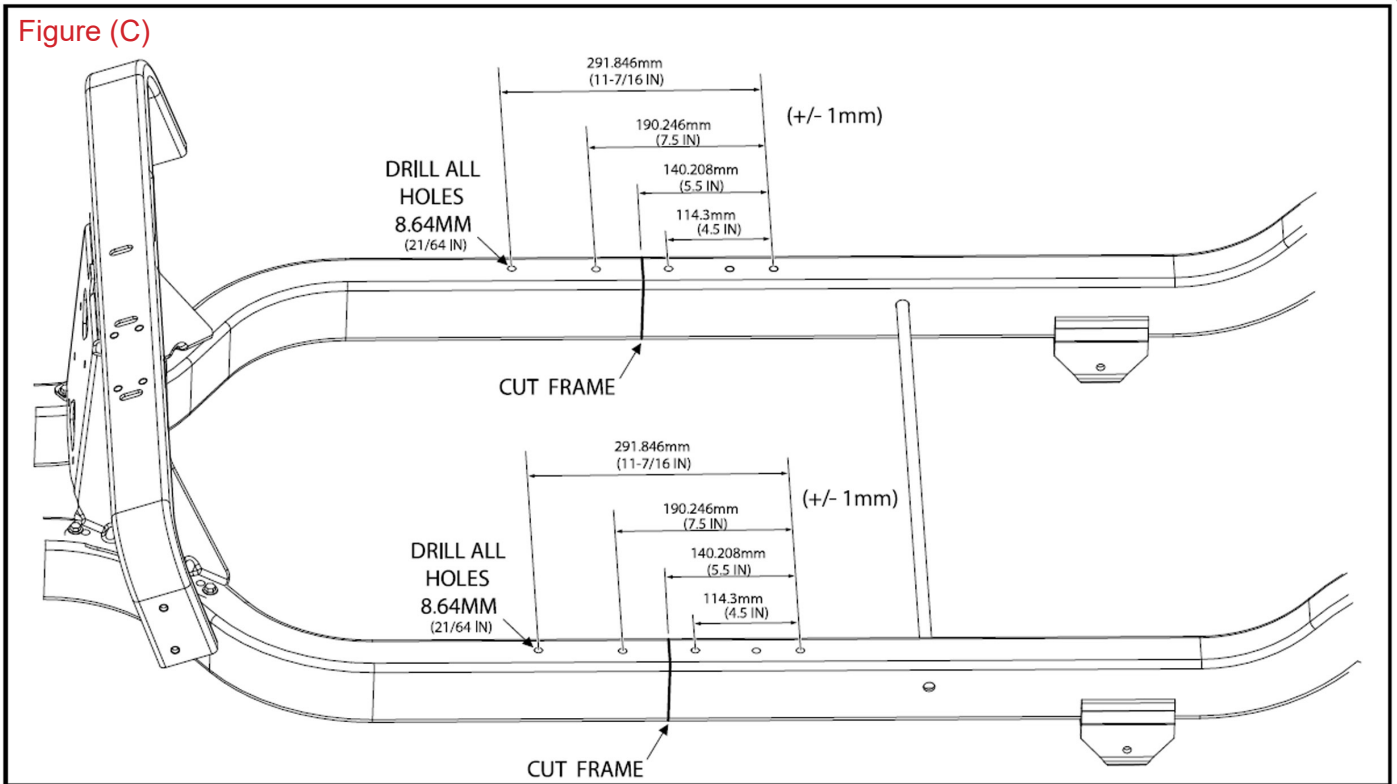


Remove 4 bolts from cross frame and retain all. Slide cross frame off of vehicle frame.

A 1" hole is needed in cross member for new shifter cable access. Measure 3.5" from factory ground and mark drill point.

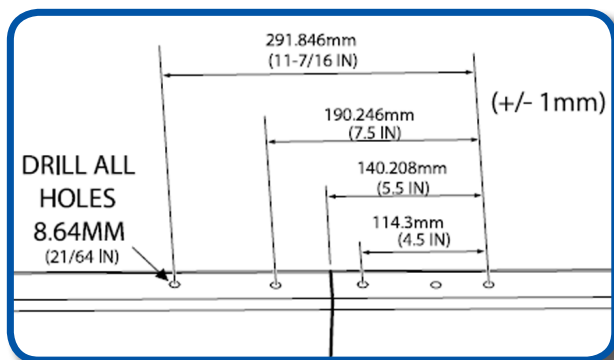


NOTE: before cutting frame, support the frame with jack stands or blocks. Be sure cart will not roll once frame has been cut. It's advised to place supports on both sides of cutting location.



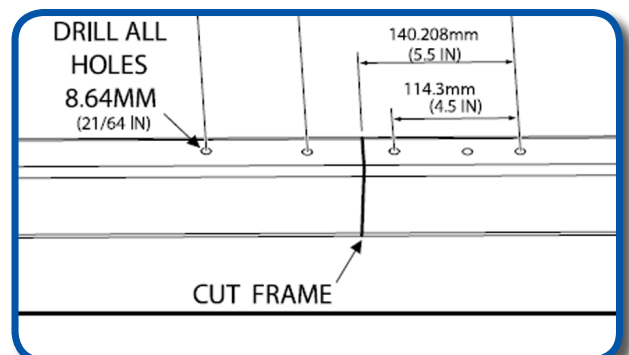
Measure, Mark, Drill, and Cut Frame Rails

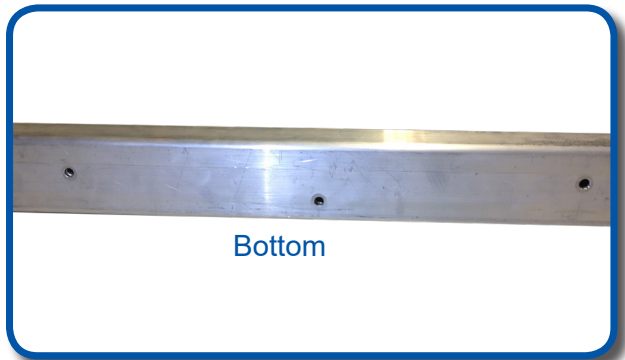
NOTE: Use **Figure (C)** as a guide. Using the rearward most mounting hole, measure forward and mark the center of the three new holes needed in **Figure (C)** Once holes are marked use a center punch at the center mark of the frame as a drill point.



Drill a 21/64 inch hole in the top of the frame only. The bottom will be drilled in a later step to ensure accuracy.

Mark frame cut line from **Figure (C)** and cut using a reciprocating saw. Be sure line is straight and square. Measure twice and cut once. **Cut frame.**



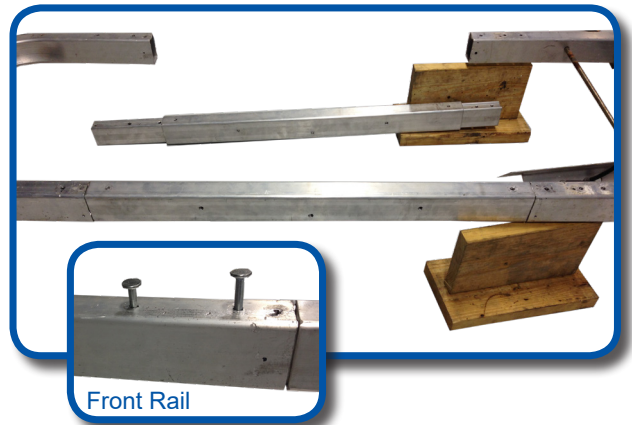


Bottom

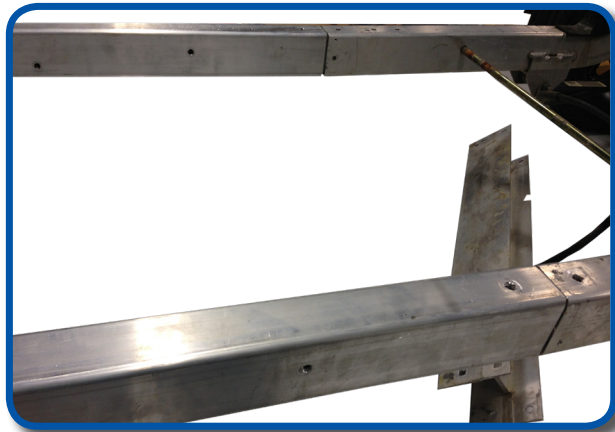


Slide frame extension cover over frame extension with center hole on bottom of rail as shown.

Insert rail extensions into front frames. Front of rail extension has 3 holes, rear has 4. Place carriage head bolts into predrilled holes of the front rails to secure temporarily.



Front Rail



With help from an assistant insert the opposite ends into the rear frames.

NOTE: Once rails and frames are joined, line up the 6 drilled holes from step 53 using a 21/64" bit, drill through bottom of the frame.

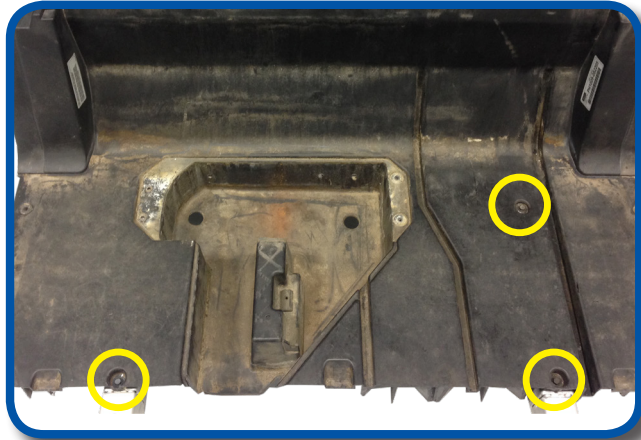
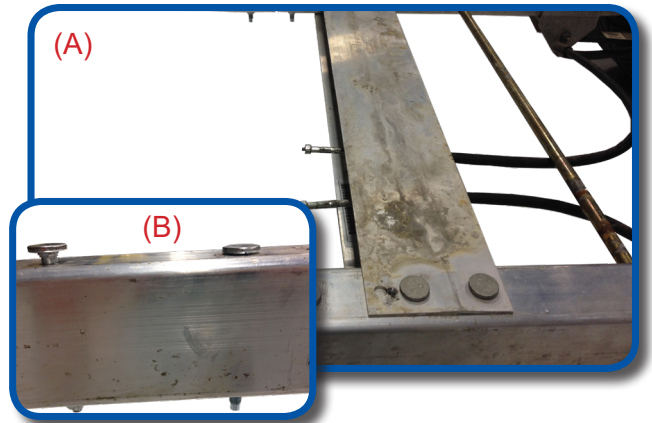
Before installing new carriage bolts into frames, reattach cross frame support using hardware retained from step 52.



(A) Secure frame, rail extensions, and frame cover together using the ten carriage bolts from Pack #1 and hardware supplied as shown.

(B) Carriage bolt will secure itself to frame once tightened as shown. You can use a hammer to help carriage bolts set in place.

ONCE ALL BOLTS ARE IN PLACE TIGHTEN HARDWARE.

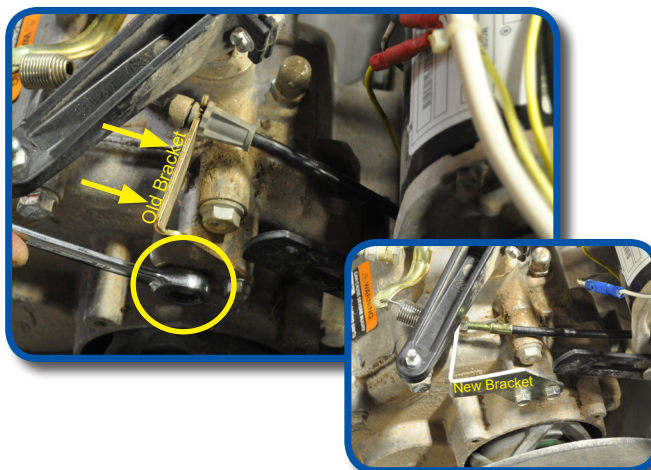
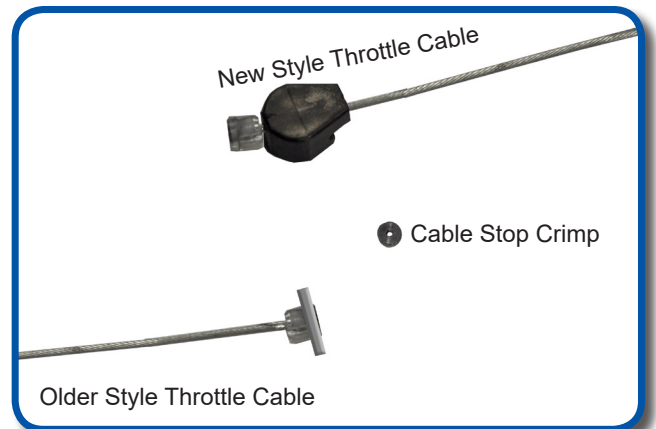


Re-attach front under body using retained hardware.

For the newer style throttle cables only. You will need to take the old short cable that came off your car, and cut its end stop off. So you can slide the black plastic piece off and reuse it on the new cable.

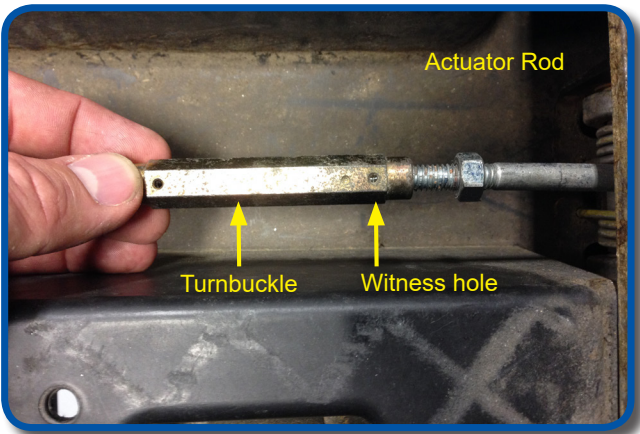
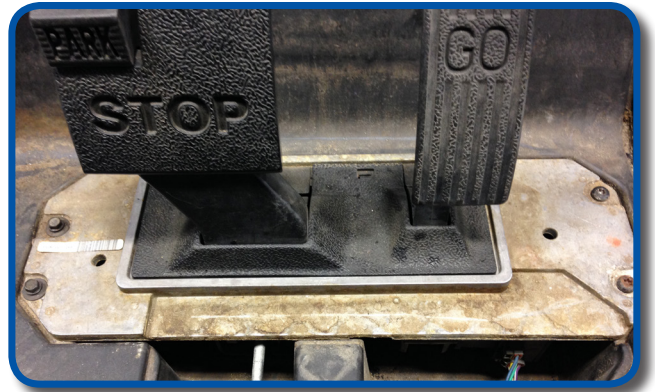
On the new longer throttle cable you will need to cut the end stop off close as possible. Slide the black plastic piece from your old cable onto the new cables end. Use the cable stop crimp on the end to secure.

Now you can install the throttle cable to the rear of the car.



At the rear of car you will need to replace original throttle cable bracket with the new one provided in the kit.

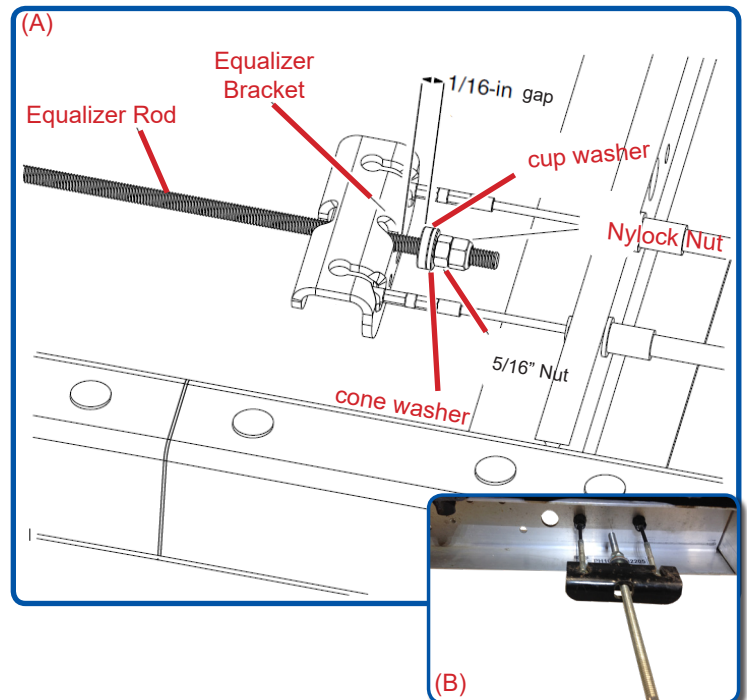
Reattach pedal assembly using retained hardware.

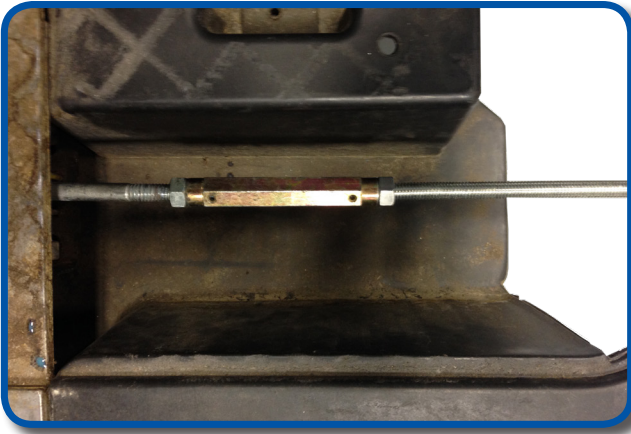


At the brake pedal apply thread locking adhesive to the threads of the actuator rod. Then thread the turnbuckle onto the rod until the threads are visible in the witness hole of the turnbuckle as shown.

(A) Insert the supplied long equalizer rod into the factory equalizer bracket as shown. A 1/16" gap is needed between the cup washer and the equalizer bracket.

(B) Reattach equalizer bracket to brake cables as shown.



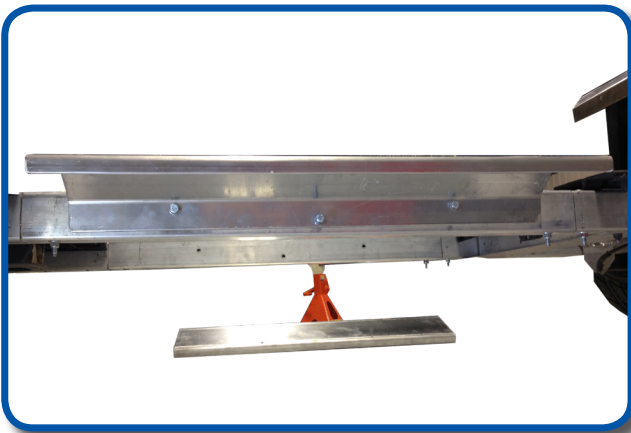


Apply thread locking adhesive to the opposite end of extension rod. Insert opposite end of rod into turnbuckle until threads are visible in the witness hole as shown. Rotate turnbuckle until threads are shown past the witness holes.

NOTE: Once turnbuckle is in desired location apply thread locking adhesive to threads of rod at turnbuckle and tighten nuts.

FURTHER BRAKE ROD ADJUSTMENT SECTION

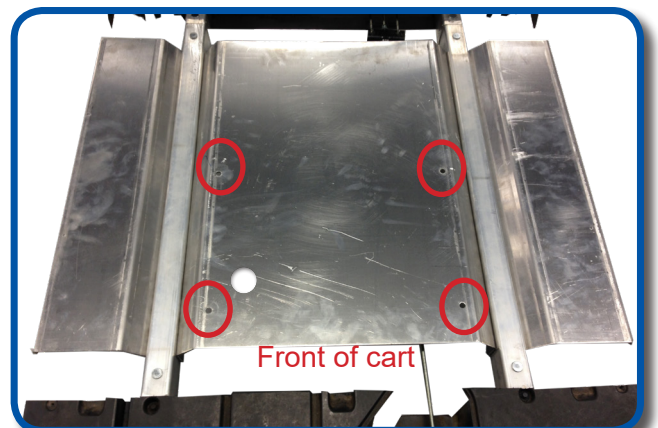
Once brake rod is reattached to vehicle, recheck the gap between the equalizer bracket and cup washer. If the gap is still 1/16" then proceed to next step, if the gap has changed adjust nuts on end of equalizer rod and recheck.

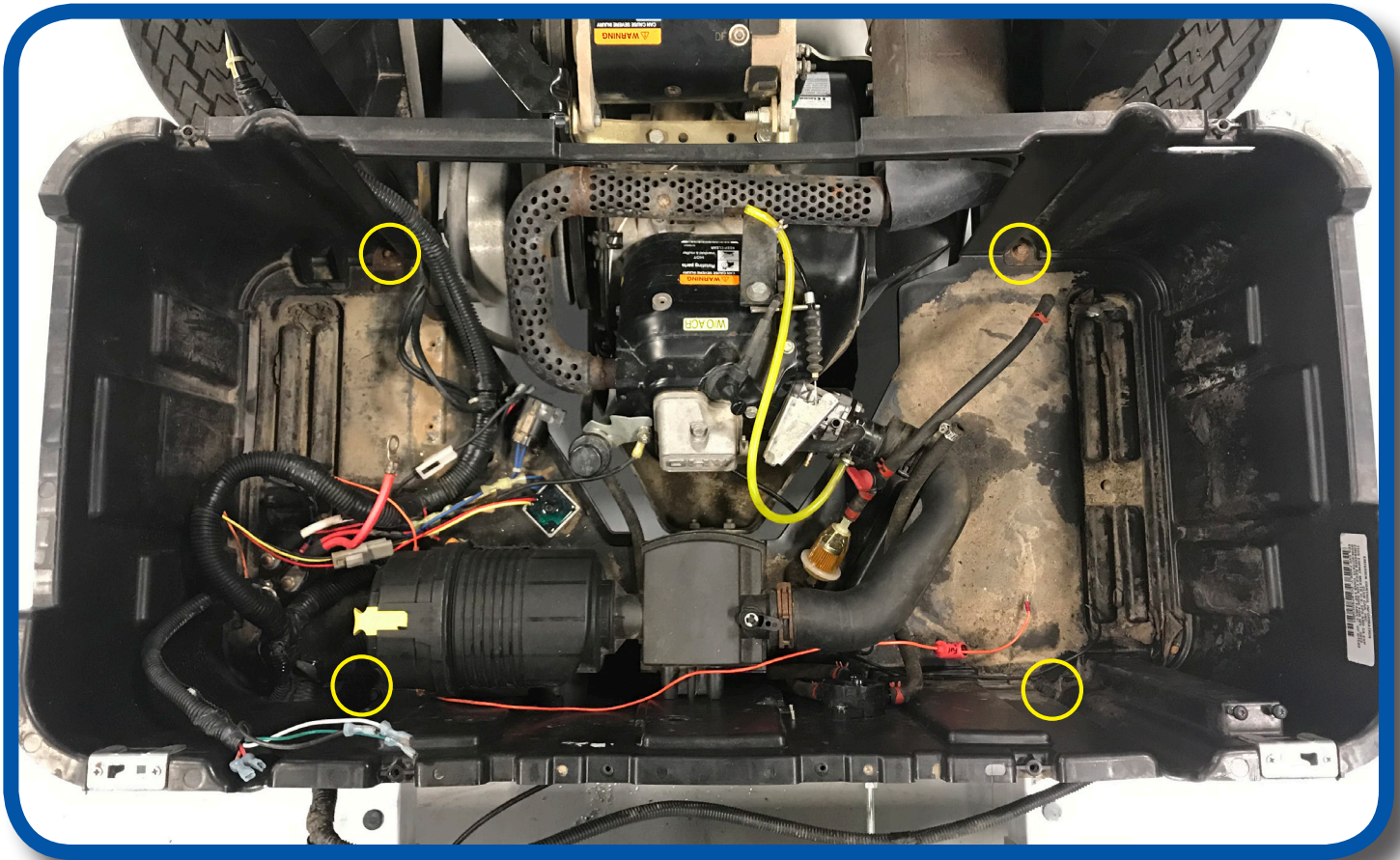


Using the six 8 x 75mm bolts from Pack #2 attach the side supports to the frame. DO NOT push bolt all the way through the frame until next step.

With side supports hanging, slide center floor support between frame rails and push bolts from previous step through frame into center support. DO NOT tighten until all 6 bolts are in place.

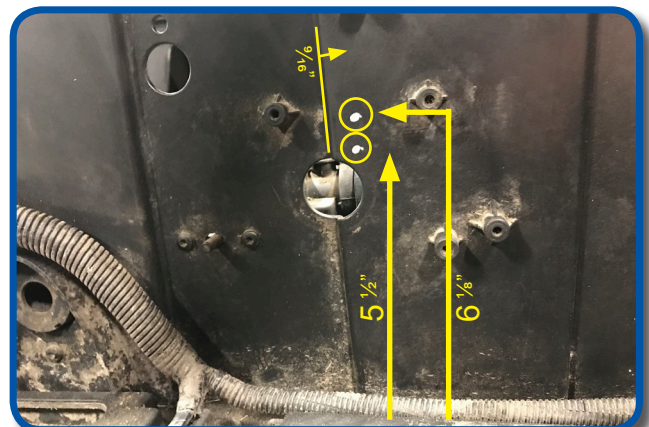
NOTE: Make sure predrilled holes on top of center support are offset to the FRONT of the cart.

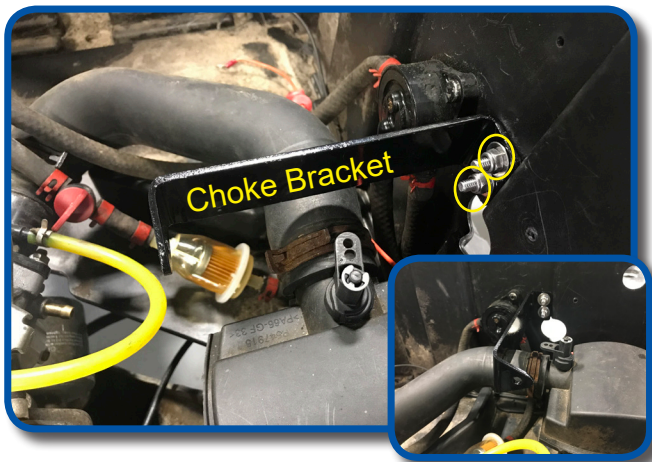




Re-attach engine bay to the frame using retained hardware.

To install new choke cable bracket, measure $9/16$ " from engine bay edge and mark location as shown. Then measure up from floor $5\ 1/2$ " and $6\ 1/8$ " and mark locations. Using a $3/16$ " bit, drill out holes for choke cable bracket.





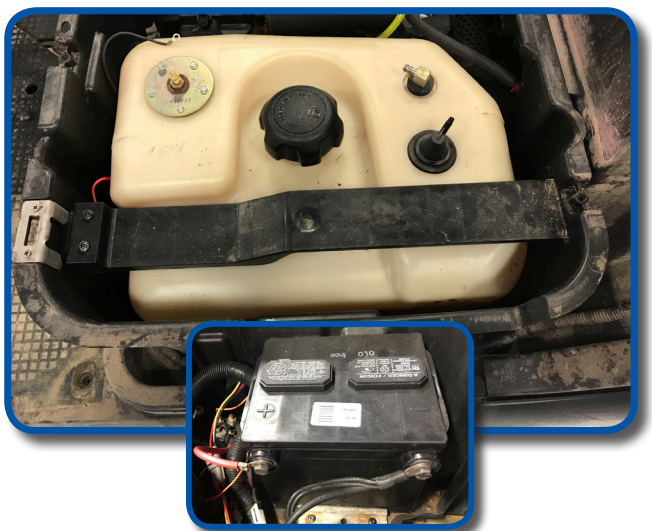
71
Attach choke cable bracket using supplied 6mm bolts and hardware as shown and tighten.

72
Using a 3/16" bit, drill a new hole in the choke cable connection between the current hole and pivot point as shown.

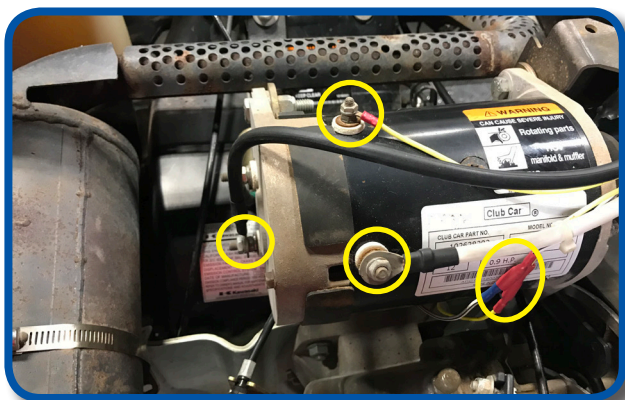
NOTE: Use pliers to secure flap while drilling



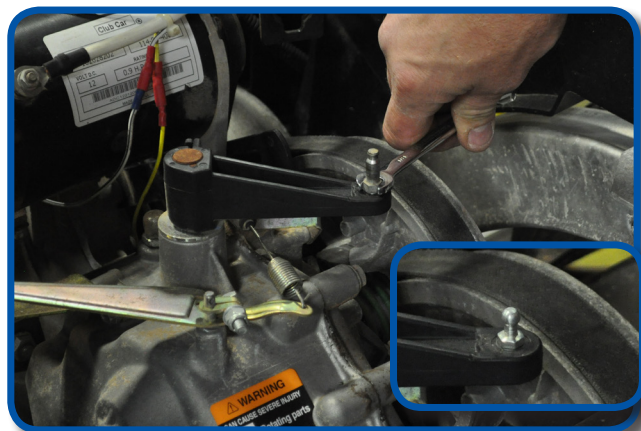
73
Reinstall battery, fuel tank, & fuel tank mount using retained hardware.



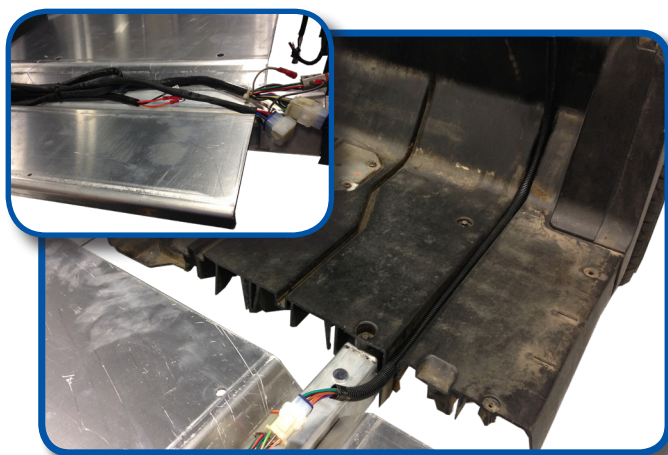
74
Remove old shifter cable from starter and install new shifter cable bracket using factory hardware as shown.



75
Re-attach starter cables and bullet connectors as shown.



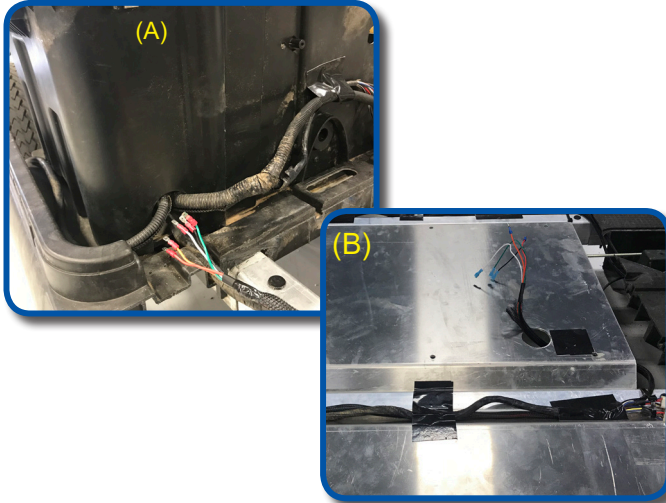
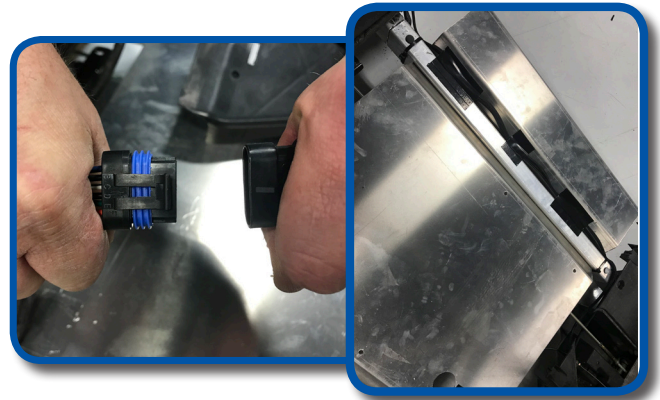
76
Remove factory shift cable ball end. Retain nut. Install provided shift cable ball end with retained nut.



77
Attach the two 9 Pin harness extensions to the factory harness. Run along passenger side channel as shown. Make sure harnesses are connected in the center support and front under body gap. Using the passenger side floor channel, run the harness to the front dash

Attach new brake harness and GCOR harness to the respective factory harnesses from step 20.

Route both along drivers side floor channel and secure with zip ties as shown.

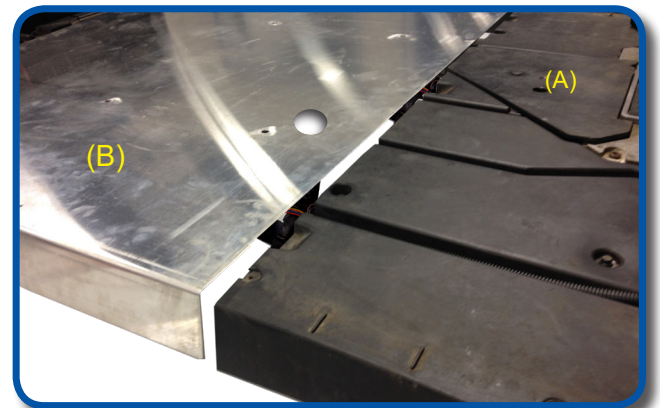


A) Feed the male spade connector end of new shifter harness through access shown and connect to factory shifter switch connections from step 29

B) Run new shifter harness along passenger floor channel and loop under cart and into floor plate hole as shown. Secure all harnesses to frame using supplied zip ties.

A) Re-attach brake pedal cover and place floor plate cover over center and outside support's.

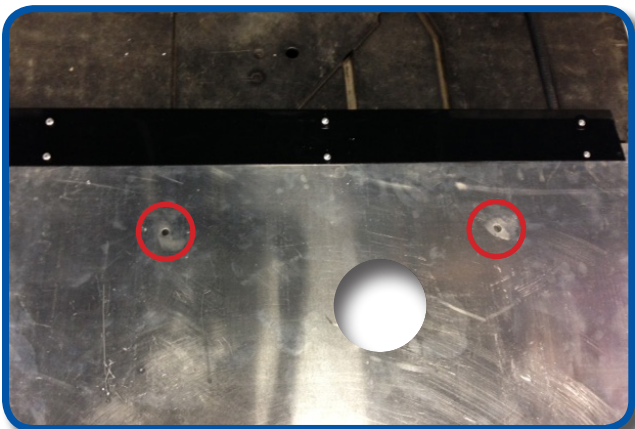
B) Place floor plate cover over center and outside supports. Make sure mounting holes align.



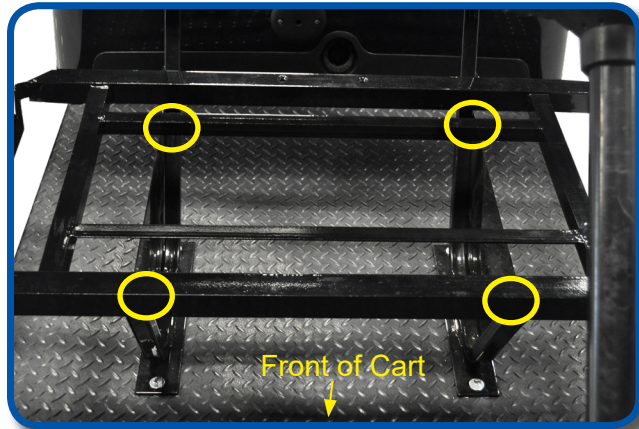
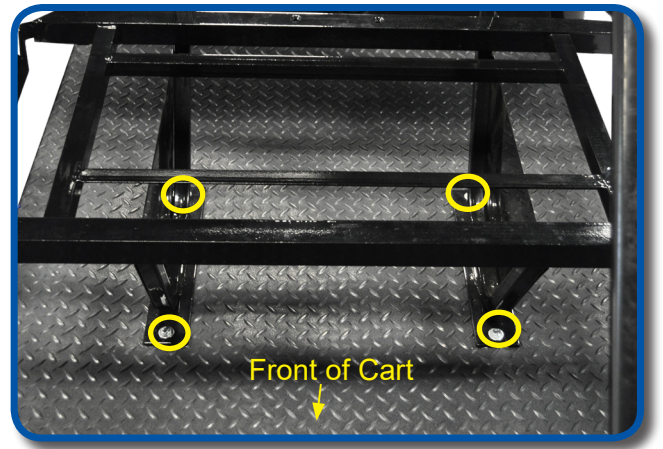
Note: Before drilling rivet holes place bolts from hardware Pack 4 into holes in floor cover plate to hold it in place.

Attach center floor threshold to floor cover plate and factory floor using six 5mm x 20mm Rivets from hardware pack #3. Remove temporary bolts.

Floor mat can now be layed out across floor board. Using a 5/16" bit, drill out seat frame support mounting holes. Take a razor blade and make a 1" X in the Shifter cable hole.

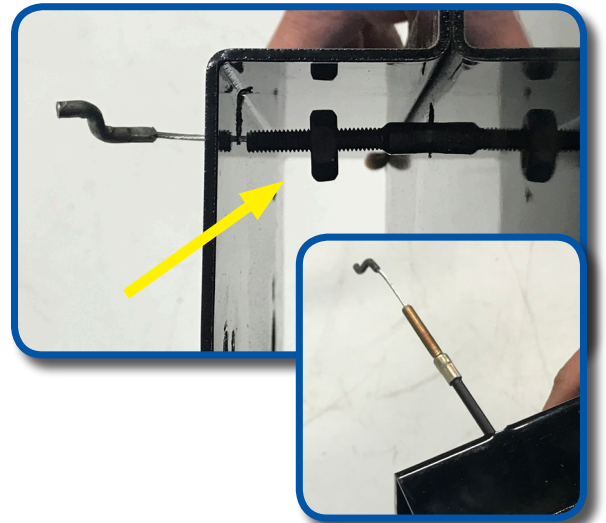


Secure seat frame to floor board using four 8mm x 35mm bolts and hardware from Pack #4. DO NOT tighten until after next step.

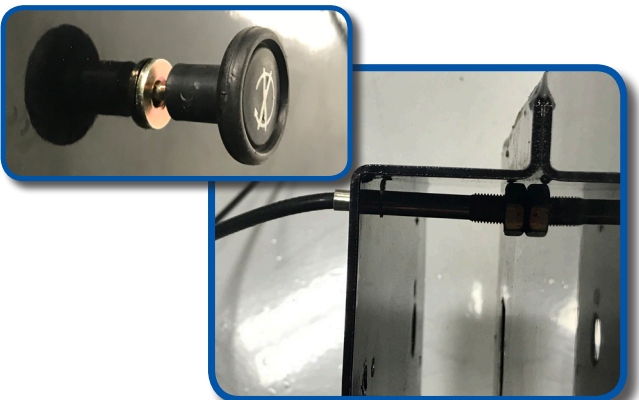


Attach seat support bracket to seat frames using four 8mm x 45mm bolts and hardware from Pack #4. Tighten hardware.

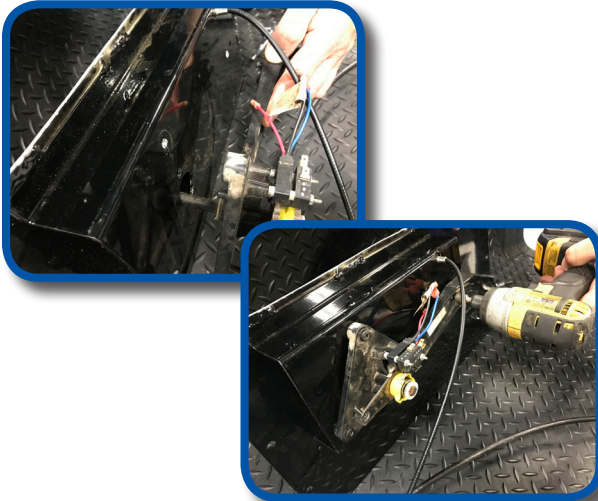
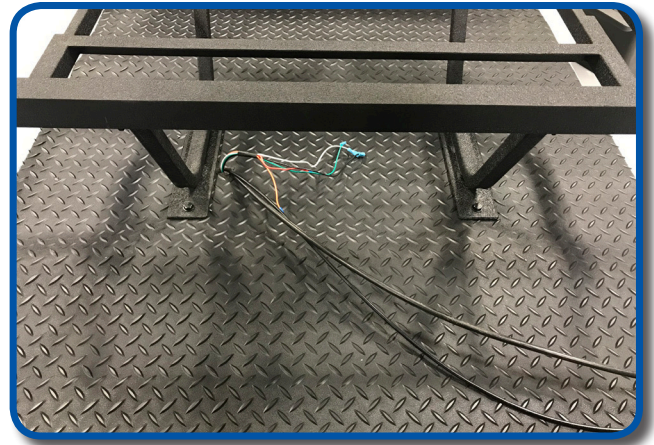
Temporarily remove jam nuts from new choke cable, feed shifter end into front of shifter mounting plate only. Re-install large jam nut onto chock cable as shown, you can now feed choke cable through back of mounting plate.



Pull remaining chocke cable until choke pull is tight against mounting plate as shown. Secure with nut on back side of shifter mounting plate.

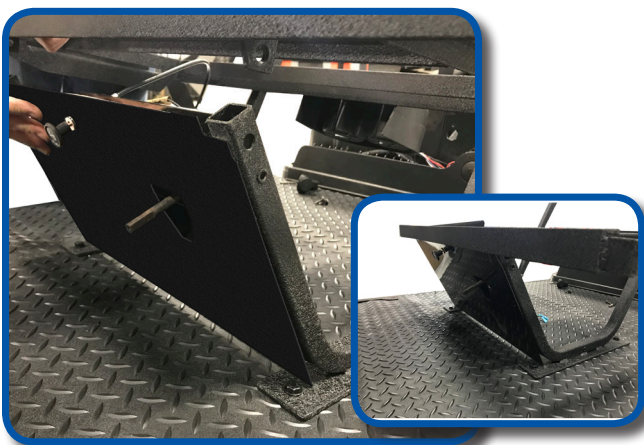
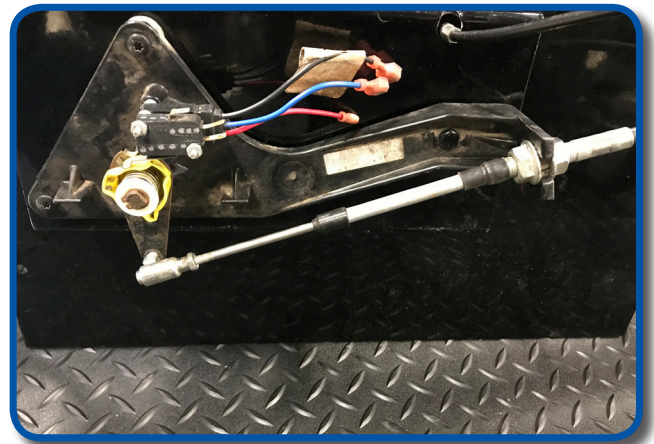


Find hole in floorboard, make an "X" cut. Pull shifter wire harness up through floor mat and feed both the choke and shifter cables into same hole as shown.



Attach shifter to back side of shifter plate using guide holes. Secure with supplied self tapping screws.

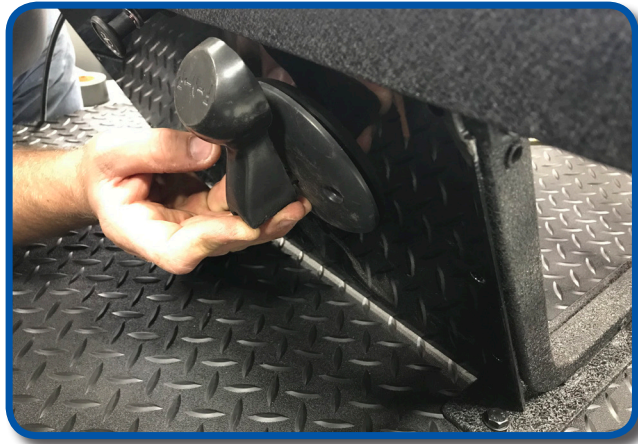
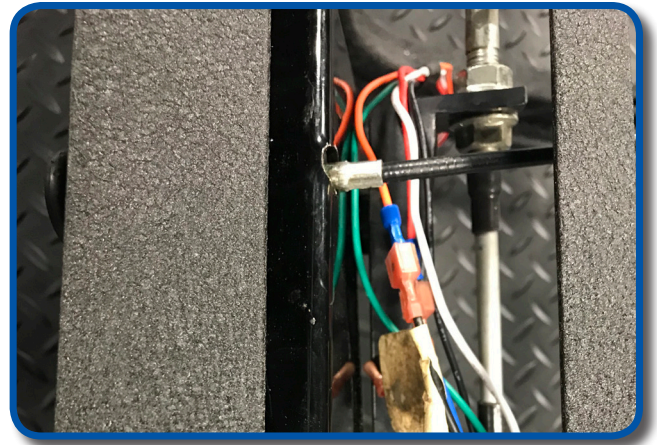
Attach shifter cable to shifter using retained nuts and ball stud on end as shown.



Temporarily remove the two front bolts of the seat frame, this will allow you to easily place the shifter plate into position as shown. Using supplied self tapping screws, secure shifter plate to the front of the seat pod. Re-insert bolts in seat frame and tighten hardware.

90

Reattach new shifter harness to shifter switch as shown.



91

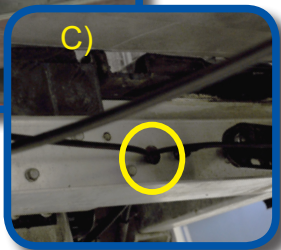
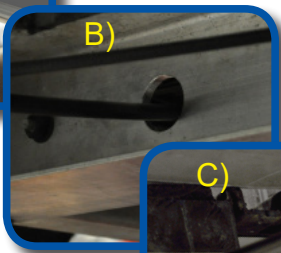
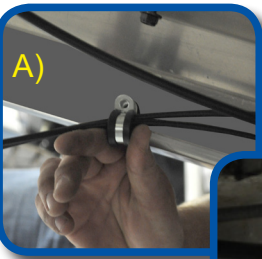
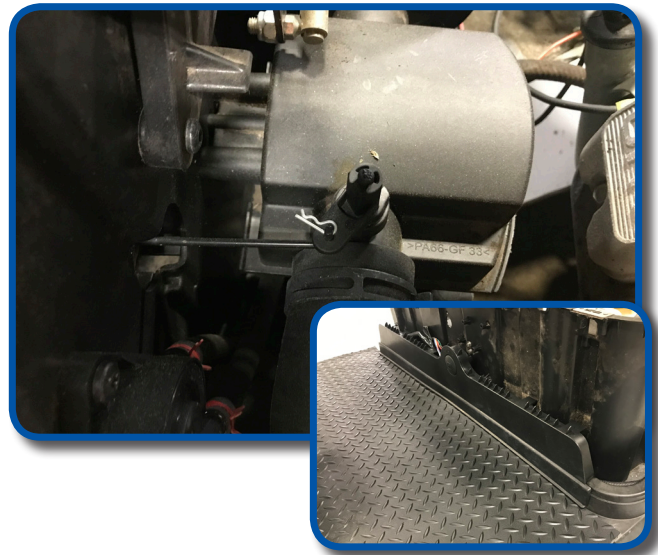
Place shifter cover over shifter link and secure with supplied self tapping screws.

Reattach shifter lever to shifter and secure with retained hardware.

2

Reattach OEM kick panel by first feeding choke linkage through engine bay hole and re-hook to Choke flap. Secure with K pin as shown.

Using retained hardware secure kick panel to the factory mounting location in floor. Tuck floor mat under panel as shown.



93

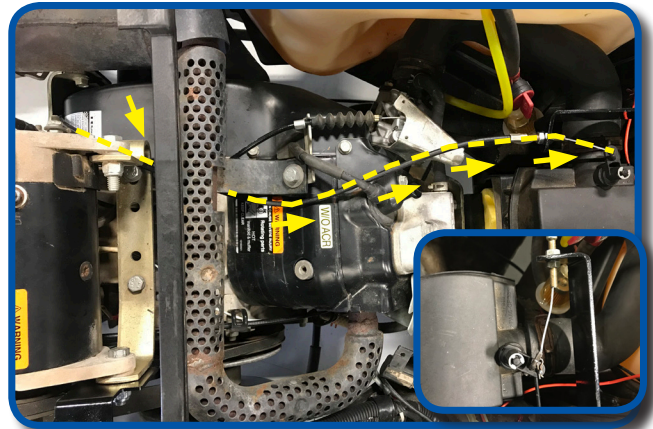
A) Secure all loose cables along the inside passenger side frame as shown.

B) The shifter cable should go through the new 1" hole drilled into cross member as shown.

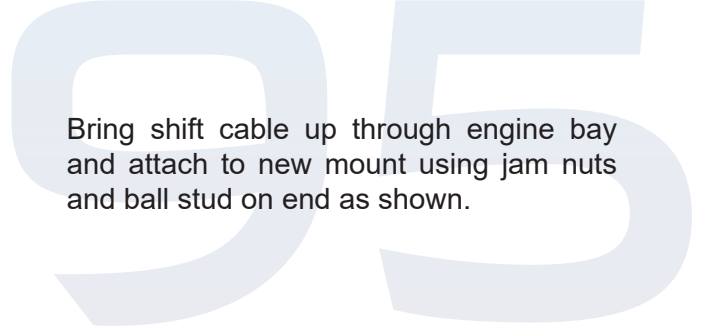
C) The choke cable should go through the 1" hole that is to the left of the brake lines as shown.

A) Route choke cable inside shield around the engine fan under the starter bracket to the provided choke bracket. Feed the cable back to the choke flap as straight as possible and avoid the muffler.

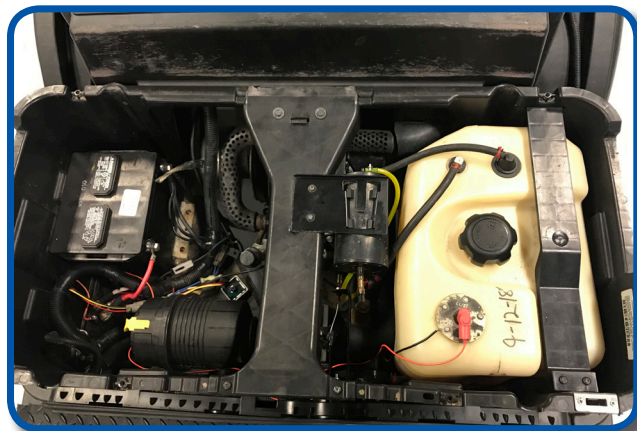
B) Using retained jam nuts secure choke cable to the new choke cable bracket. Adjust until OEM choke barely engages, then tighten nuts.



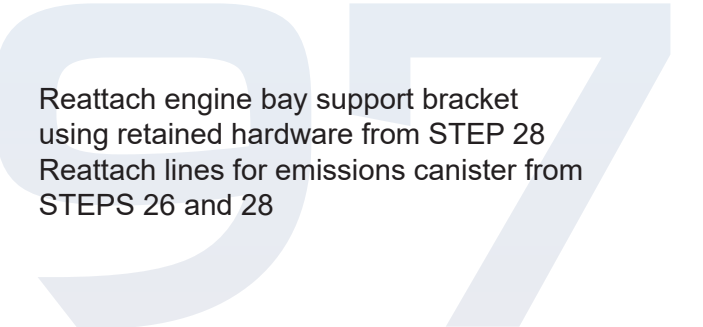
Bring shift cable up through engine bay and attach to new mount using jam nuts and ball stud on end as shown.



Reattach rear underbody using retained hardware and reverse technique from step 29.

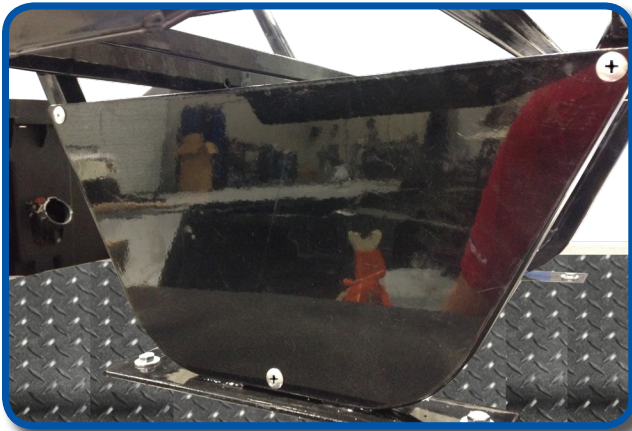
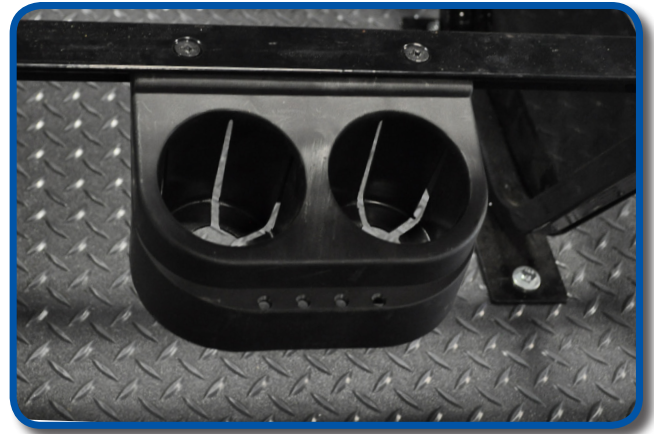


Reattach engine bay support bracket using retained hardware from STEP 28
Reattach lines for emissions canister from STEPS 26 and 28



98

Attach rear cup holder to seat support bracket using two 8mm x 25mm countersunk bolts and hardware from Pack #4.

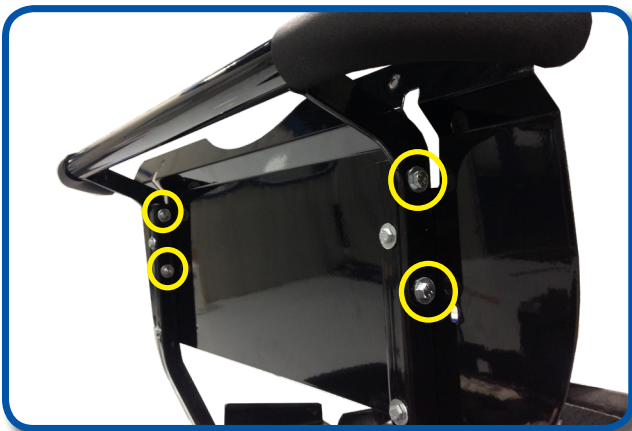
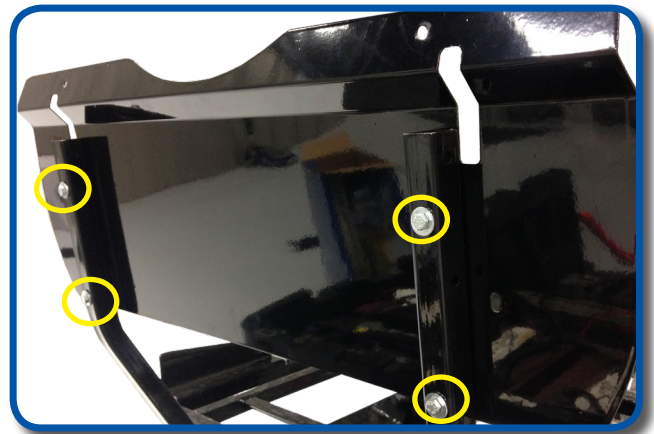


99

On the outside of seat frames secure the bottom of the seat panels using the screws in the seat frame.

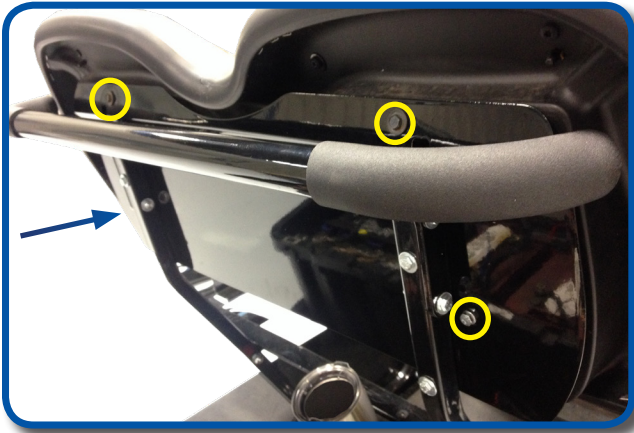
100

Attach the seat back mounting plate to the upper frames using four 6mm x 35mm bolts and hardware from Pack #5 as shown. Once all four bolts are in place, tighten.



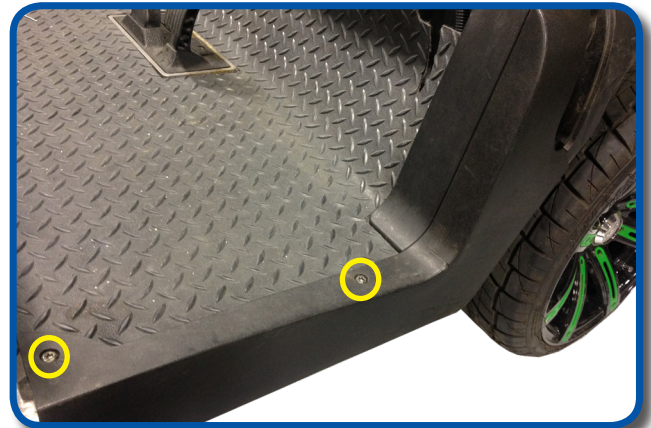
101

Attach rear grab bar using four 6mm x 40mm bolts and hardware from Pack #5 as shown. Once all four bolts are in place, tighten.



Attach front seat back using retained hardware from step 3 and two 6mm x 20mm bolts and hardware from Pack #5 as shown.

Re-attach the front end of the floor mat retainers, and secure with four Torx head screws from Pack #6.



Note: Be sure to route the tail light harnesses along outside of engine bay before next step.
***Passenger tail light has a yellow center wire.
Reattach rear body using the retained screws from step 16.

Cover the old shifter lever hole with the supplied cover shown using retained hardware from step 15. Use supplied push rivet to fill hole.

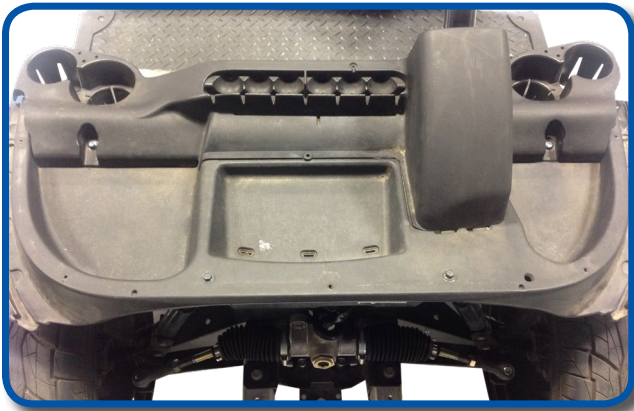


106

Re-attach rear mat retainer to hold side body panel in place.



At this point if you are installing a rear seat kit do so now.



107

Re-attach dash assembly using retained hardware from step 11.

108

Attach fascia and brow assembly to front underbody using five screws retained in step 9.

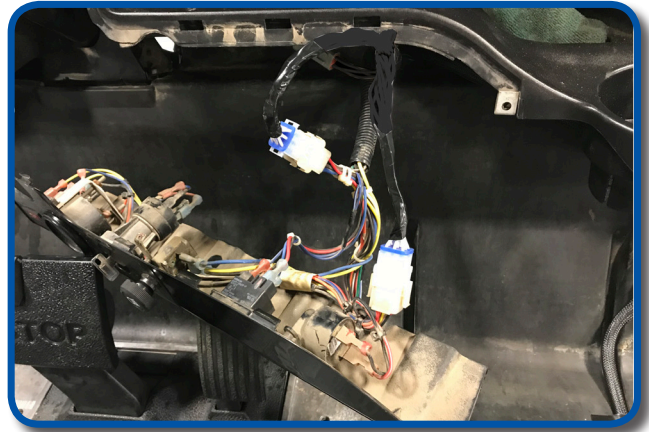


109

Place front cowl onto brow and attach brow cap using retained hardware from step 8.

110

Plug in 9 pin connectors to dash assembly as shown. Reattach dash assembly using retained hardware.



111

Attach new floor mat retainers (from box 2) to floor board using 30mm rivets from Pack #3.

112

You can now install front seat cushions.



INSTALLATION COMPLETE

HARDWARE PACK

Pack 1

10 - 8mm x 95mm Carriage Bolts

10 - 8mm Lock nuts

10 - 8mm x 17mm Flat Washers

Pack 2

6 - 8mm x 75mm Hex Head Bolts

12 - 8mm x 17mm Flat Washers

6 - 8mm Locknuts

Pack 3

14 - 5mm x 20mm Rivets

Pack 4

4 - 8mm x 45mm Hex Head Bolts

4 - 8mm x 35mm Hex Head Bolts

2 - 8mm x 25mm Counter Sunk Bolts #3

18 - 8mm x 17mm Flat Washers

10 - 8mm Lock Nuts

Pack 5

4 - 6mm x 40mm Hex Headbolts

4 - 6mm x 35mm Hex Headbolts

2 - 6mm x 20mm Hex Headbolts

20 - 6mm x 15mm Flat Washers

10 - 6mm Locknuts

10 - Zip Ties

Push Rivet

Thread locking Adhesive

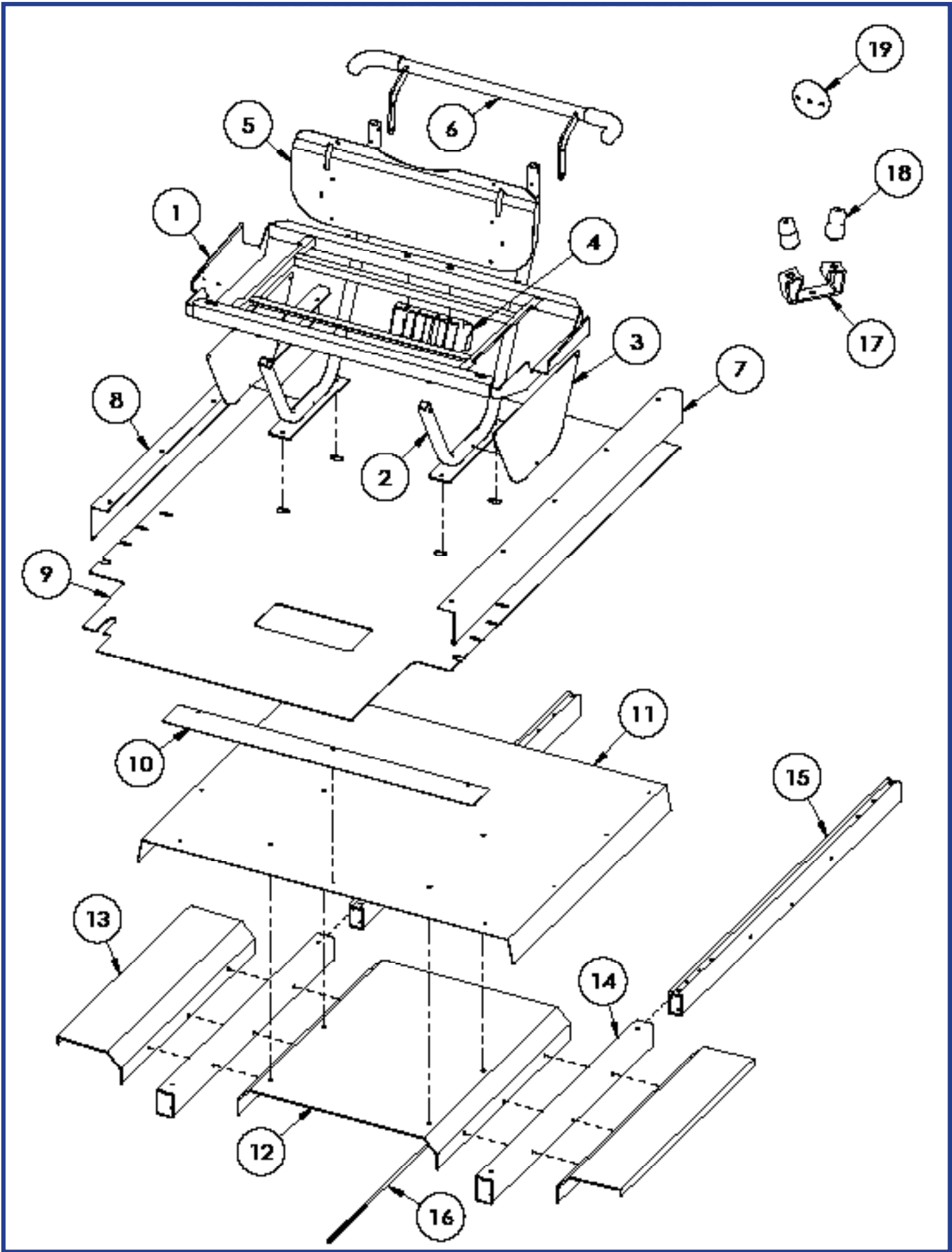
Pack 7 (Only for GAS KIT)

2 - 6mm x 20mm Hex Headbolts

4 - 6mm Flat Washers

2 - 6mm nylock nuts

10 - Self tapping screws



17-099 PRECEDENT STRETCH KIT
WARRANTY PARTS EXPLODED VIEW DIAGRAM
(See Page 1 for Exploded View Diagram)

17-099 - PRECEDENT STRETCH KIT			
ITEM #	DESCRIPTION	PART #	QTY
1	Seat Frame	W17-99-1	1
2	Seat Support Bracket	W17-99-2	2
3	Seat Frame Closeout	W17-99-3	2
4	Cup Holder	W17-99-4	1
5	Seat Back Plate	W17-99-5	1
6	Grab Bar	W17-99-6	1
7	Floor Mat Retainer (Driver Side)	W17-99-7	1
8	Floor Mat Retainer (Passenger Side)	W17-99-8	1
9	Diamond Plate Floor Mat		1
10	Threshold		1
11	Floor Cover Plate		1
12	Center Floor Support		1
13	Side Floor Support		2
14	Frame Extension Cover		2
15	Frame Extension		2
16	Equalizer Rod		1
17	Jounce Bracket		2
18	Jounce Bumper	W17-99-9	4
19	Forward Reverse Bezel	W17-99-10	1
20	MCOR Harness Extension	W17-99-11	1
21	IP Harness Extension	W17-99-12	1
22	Bucket Harness Extension	W17-99-13	1
23	Brake Pad Harness Extension	W17-99-14	1
24	FNR Sticker	W17-99-15	1
25	Hardware Pack-1	W17-99-16	1
	M8x95 Carriage Bolts		10
	M8 Lock Nuts		10
	M8 Flat Washers		10
26	Hardware Pack-2	W17-99-17	1
	M8x75 Hex Head Bolts		6
	M8 Flat Washers		12
	M8 Lock Nuts		6
27	Hardware Pack-3	W17-99-18	1
	M5x20 Rivets		14
28	Hardware Pack-4	W17-99-19	1
	M8x45 Hex Head Bolts		4
	M8x35 Hex Head Bolts		4
	M8x25 Countersunk Bolts #3		2
	M8 Flat Washers		18
	M8 Lock Nuts		10
29	Hardware Pack-5	W17-99-20	1
	M6x40 Hex Head Bolts		4
	M6x35 Hex Head Bolts		4
	M6x20 Hex Head Bolts		2
	M6 Flat Washers		20
	M6 Lock Nuts		10
	Push Rivet		1
30	Zip Ties (Included in Box)		10