

# MADJAX

## Part # 14-013 Armor Bumper

will fit Club Car® Precedent®



### ITEMS INCLUDED

- Front Armor Bumper
- Mounting Brackets
- Hardware pack
- Upper Bar
- Mounting Tabs

### TOOLS NEEDED

- 13mm Socket
- 17mm Socket
- 13mm wrench
- 17mm wrench
- Ratchet / Cordless impact



**Madjax recommends professional installation. If you choose to not have this product installed by a professional, we highly recommend that you exercise caution, care, and patience when installing this product as it involves drilling holes into your cart's body.**

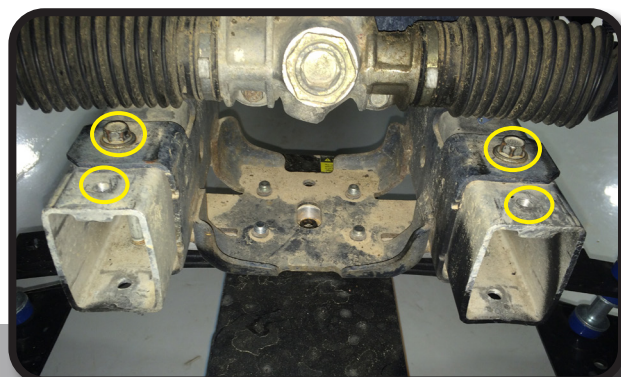
## STEP 1

Remove factory bumper from cart by taking out two bolts from back of bumper as shown. Also unplug headlight bar if installed on cart.



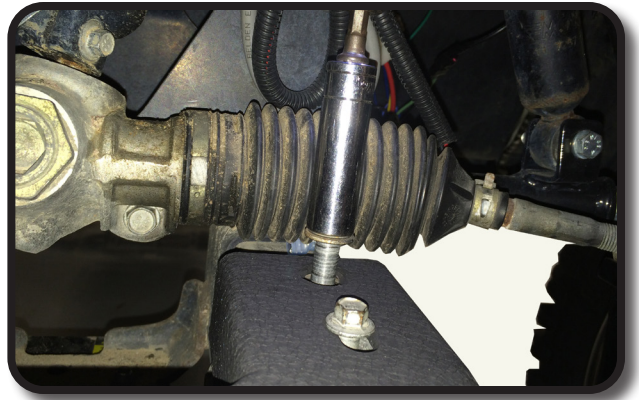
## STEP 2

Remove the two rear frame bolts and retain hardware.



## STEP 3

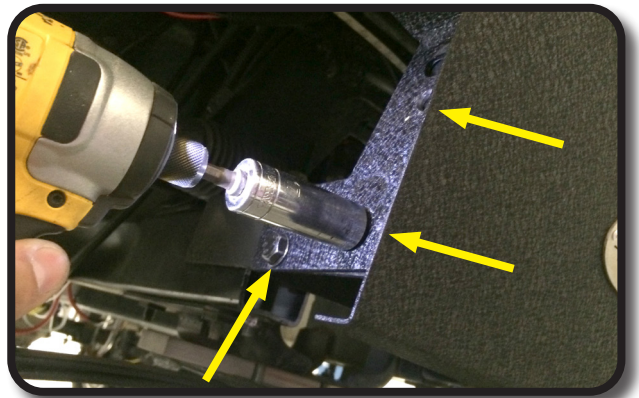
Place the Madjax Armor Bumper mounting bracket in place of the factory bumper. Attach using supplied 8mm hardware and two bolts retained from step 2. Tighten.



**If you have purchased a MJFX winch you will need to attach it to the mounting bracket before moving forward. Hardware supplied with winch. See installation instructions on next page.**

## STEP 4

Now you can begin attaching the bumper to the mounting bracket. With the help of an assistant, attach the bumper to the bracket using the six 10mm x 30mm bolts provided.



**Before tightening the bumper, you can adjust the bumper to your specifications by using the slotted holes in the bumper and bracket. Once bumper is adjusted to your preferred location you may tighten all hardware.**

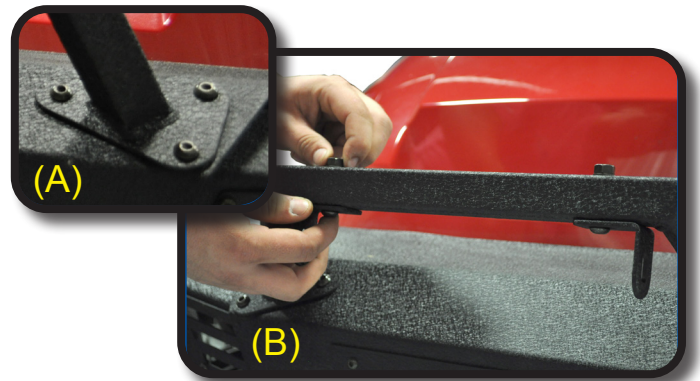
# 11" LED Bar Installation

## STEP 1

Part# 02-025

(A) Attach upper bar to bumper using six 8mm x 20mm Allen Head Bolts.

(B) Mount tabs to rail of bumper in the pre drilled holes as shown, using the two 8mm x 40mm Allen Head bolts and hardware.



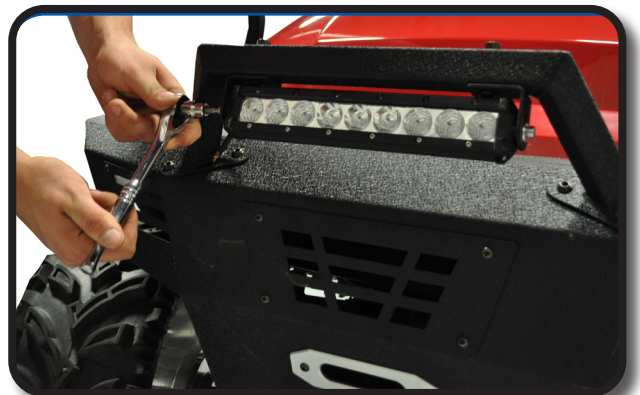
## STEP 2

Make adjustments to tabs for the light bar to fit inside of and tighten brackets.



## STEP 3

Attach light bar using supplied hardware in LED kit.

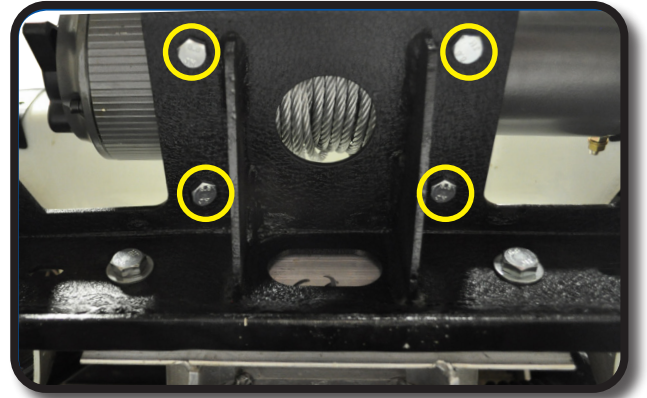
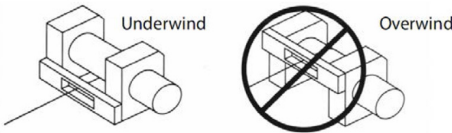


# Winch and 4" LED Bar Installation

## A Part# 03-033

Attach MJFX Winch using Hardware provided with Winch Kit.

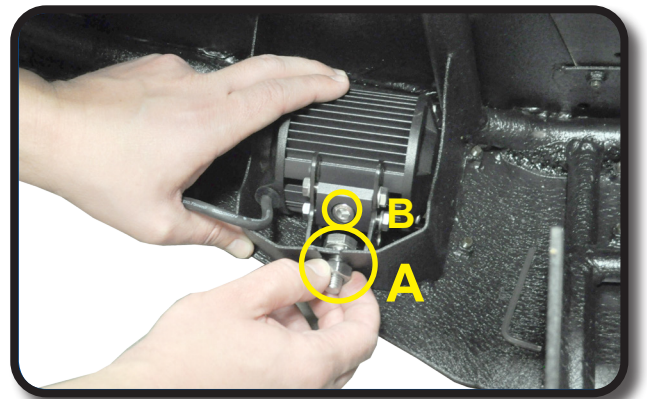
**NOTE:** Winch line should be mounted with line in the underwind direction.



## B Part# 02-024

Attach 4" LED Bar to bumper. Loosen nut on 4" LED, and then tighten to secure LED to bumper. (A)

**NOTE:** To adjust LED position, loosen the highlighted bolt and re-tighten at desired location. (B)



# INSTALLATION COMPLETE

## HARDWARE PACK

Dacroment Coated

6 - 10mm x 30mm Hex head bolts

12 - 10mm Flat washers

6 - 10mm Locknuts

2 - 8mm x 40mm allen head bolts

6 - 8mm x 20mm allen head bolts

2 - 8mm Flat washers

2 - 8mm Locknuts

Club Car®, Club Car® Precedent®, and Club Car® DS® are registered trademarks of Ingersoll Rand, Inc. ("Ingersoll Rand"). Reference to Club Car®, Club Car® Precedent®, or Club Car® DS® or any of Ingersoll Rand's trademarks, word marks, or products is only for purposes of identifying golf carts with which this Madjax product is compatible. Madjax products are aftermarket parts and are not original equipment parts. Madjax is not connected to, affiliated with, sponsored by, or endorsed by Ingersoll Rand or any of its subsidiary companies.