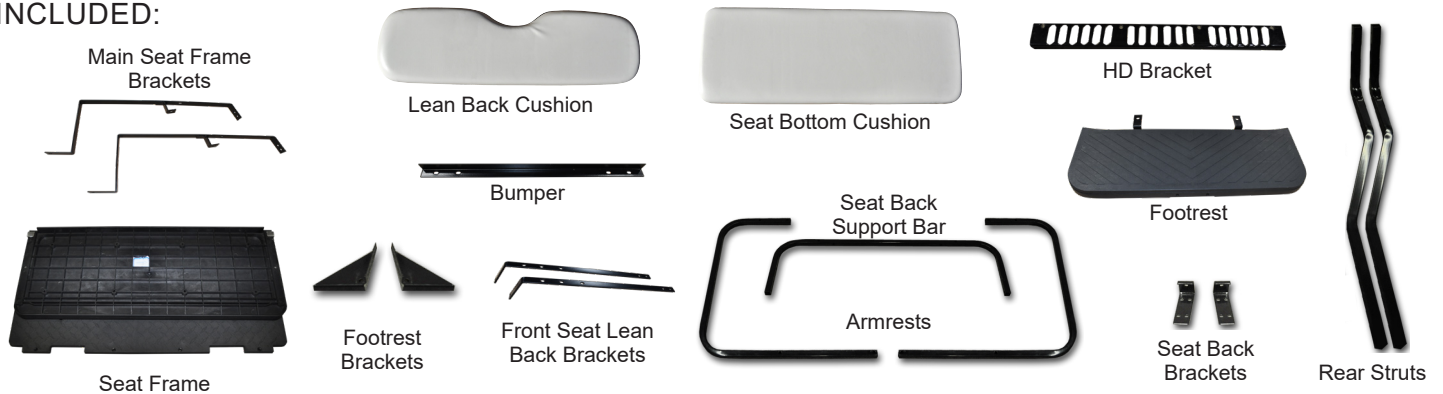




Rear Flip Seat Kit & Frame Only Kit Installation Instructions for Club Car® DS®

**Cushions not included in Frame Only Kits*

INCLUDED:



Switch the key switch to the OFF position and engage the Parking Brake.

Remove all rear factory components. Canopy, struts, bumper, motor cover, front seat and seat bracket. Retain canopy hardware.



Tool Required: 17mm Socket & Wrench

Install new **Bumper** using 10x30mm bolts from Pack 1.



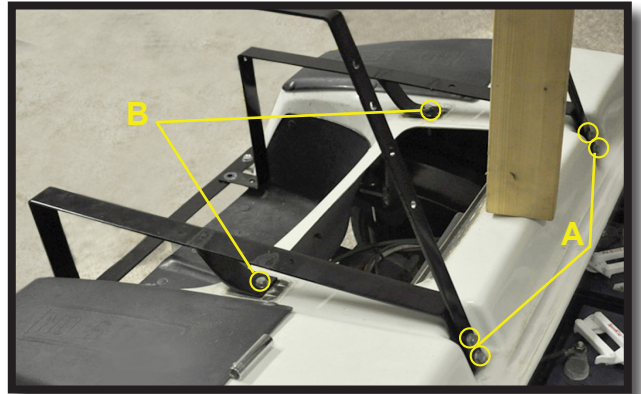


1/2" Socket, 13mm Socket & 14mm Wrench

(A) Install **Main Seat Frame Brackets** and **Front Seat Lean Back Brackets** to front with retained hardware.

(B) Using 8x30mm bolts from Pack 1, secure middle of **Main Frame Brackets** to cart.

Note: Replace Motor Cover once bolts are tightened.



17mm Socket & Wrench

Slide mounting tabs of **Footrest** between **Main Seat Frame Brackets** and **Bumper** as shown.

Attach all parts together using 10x30mm bolts from Pack 1.



17mm Socket & Wrench

Attach **Seat Frame** to the front portion of the **Main Frame Brackets** using 10x25mm bolts from Pack 2.



17mm Socket & Wrench

IMPORTANT: Do not tighten hardware until Step 12 is complete.

Attach **Seat Frame** to the rear portion of the **Main Frame Brackets** using 10x25mm bolts from Pack 2.





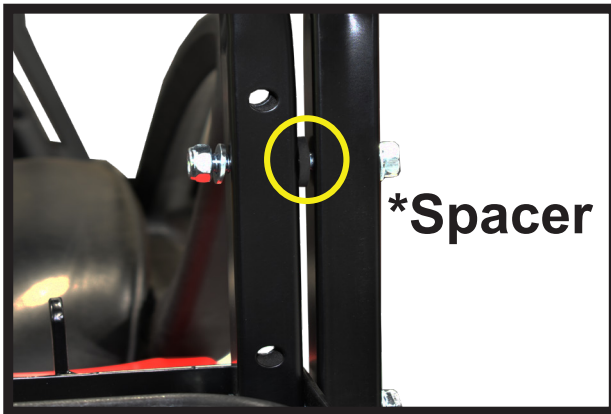
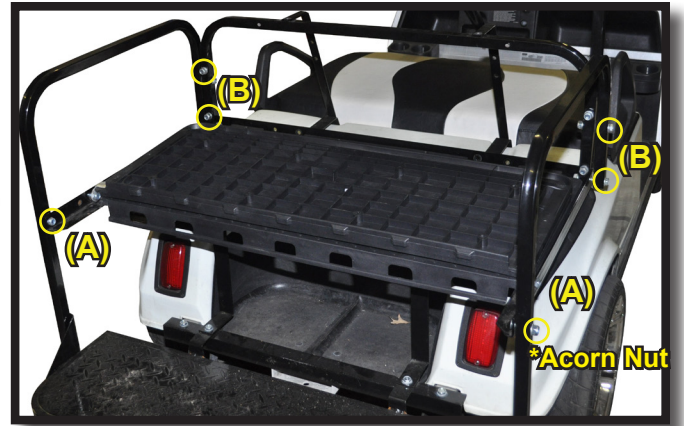
17mm Socket & Wrench, #3 Phillips Tip

Place **Seat Back Support Bar** in rear of **Seat Frame** as shown.

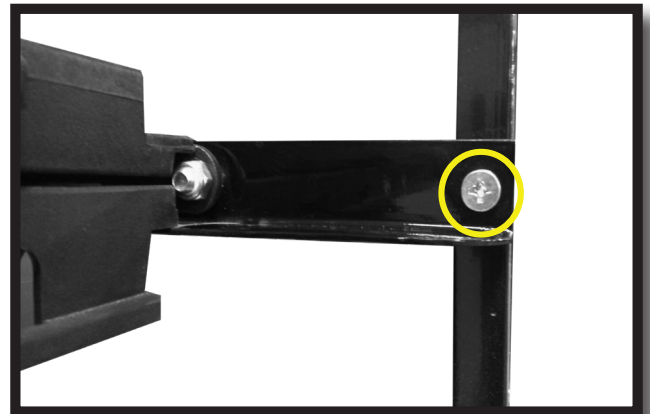
A) Attach **Armrests** to the front of **Seat Frame** using the 10x45mm Countersunk bolts from Pack 3. Repeat process on the other side.

B) Using 10x70mm bolts and Rubber Spacers from Pack 3, attach the **Arm Rests** to the rear of the **Seat Frame** and **Seat Back Support Bar**.

*Note: *Acorn Nut from Pack 3 goes on the outside of the Armrests as shown.*



***Countersunk Bolt**



17mm Socket & Wrench

Attach bottom of **Armrests** to **Footrest** using the **Footrest Brackets** and 10x70mm bolts from Pack 3.





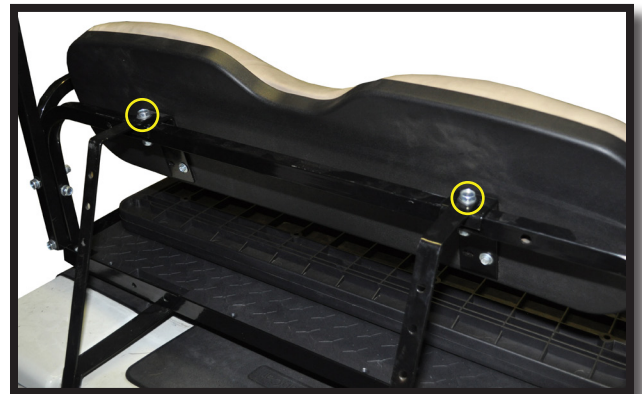
10mm Socket

Using the 6mm hardware from Pack 4, attach the **Seat Back Brackets** to the **Rear Lean Back Cushions** as shown.



17mm Socket & Wrench

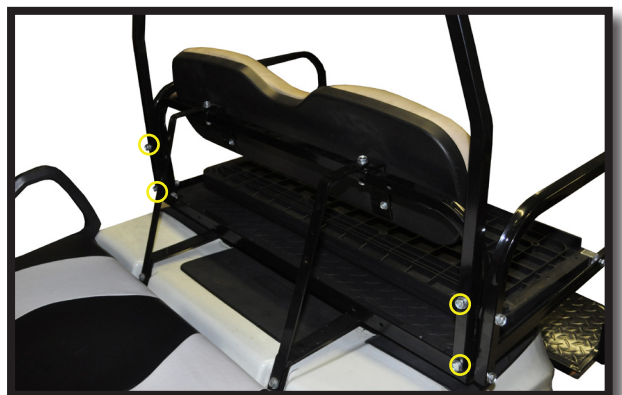
Attach **Seat Back Cushion w/Brackets** between the **Seat Back Support Bar** and **Front Lean Back Brackets**. Secure using 10x50mm bolts from Pack 5.



17mm Socket & Wrench

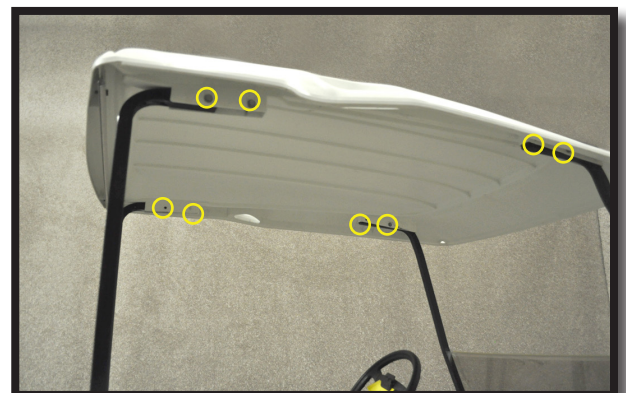
For older model (1982-2000.5) carts with (two lean back cushions) you will need to install Candy Cane struts (sold separately).

For models 2000.5 + UP, use the new **Rear Struts** supplied with this kit. Attach Struts to the Seat Back Support Bar using 10x70mm bolts from Pack 5.



Attach canopy to struts using hardware from Step 1.

You can now tighten ALL seat kit hardware.

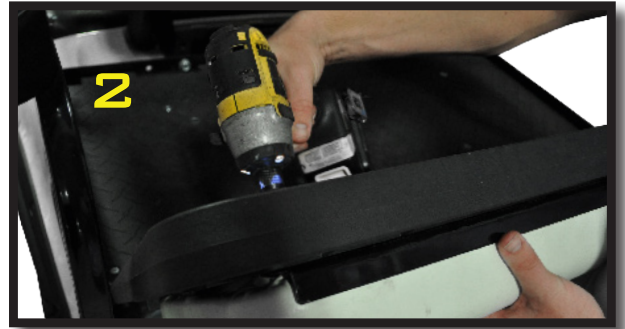
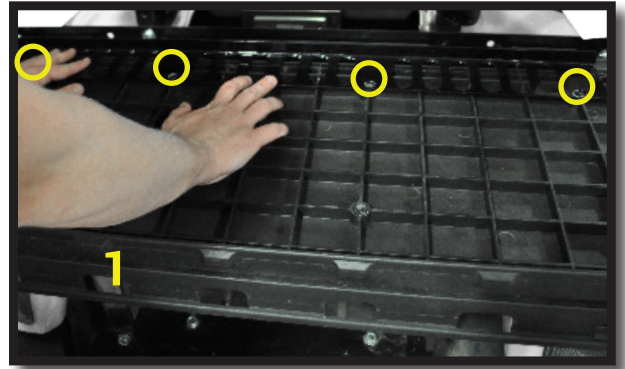




8mm Socket

1. Place HD bracket on flip seat as shown. Align bracket holes to the flip seat mounting holes. Insert Nylon seat strap between HD bracket and flip frame at desired location.

2. Make sure the thickest part of the seat bottom is towards the rear. Center seat bottom from left to right on flip frame. Press cushion firmly against HD bracket and seat frame. Using countersunk bolts from Pack 6, tighten the seat bottom to seat frame as shown.



INSTALLATION COMPLETE

HARDWARE PACK

Pack 1

- 2 - 8x30mm Hex Bolt
- 4 - 10x30mm Hex Bolt
- 8 - 10x20mm Flat Washer
- 4 - 8x17mm Flat Washer
- 2 - 8mm Nylock Nut
- 4 - 10mm Nylock Nut

Pack 2

- 4 - 10x25mm Hex Bolt
- 8 - 10x20mm Flat Washer
- 4 - 10mm Nylock Nut

Pack 3

- 6 - 10x70mm Hex Bolt
- 2 - 10x45mm Countersunk Bolt
- 14 - 10x20mm Flat Washer
- 6 - 10mm Nylock Nut
- 2 - Rubber Spacers
- 2 - 10mm Acorn Nuts

Pack 4

- 4 - 6x20mm Hex Bolt
- 4 - 6mm Nylock Washer
- 4 - 6x17mm Flat Washer

Pack 5

- 4 - 10x70mm Hex Bolt
- 2 - 10x50mm Hex Bolt
- 12 - 10x20mm Flat washer
- 6 - 10mm Nylock nut

Pack 6

- 8 - 8x30mm Countersunk Bolt
- 1 - Nylon Strap

Club Car® DS® are registered trademarks of Ingersoll Rand, Inc. Reference to Ingersoll Rand's trademarks and products is solely for the purpose of identifying golf carts with which this GTW product is compatible. GTW products are aftermarket parts and are not original equipment parts. GTW is not connected, affiliated with, or sponsored by Ingersoll Rand® or Club Car®.